

Activity Name	Original Duration	Planned Start	Planned Finish	2011				2012				2013				2014				2015				2016	
				Q3	Q4	Q1	Q2	Q3	Q4	Q1	Q2	Q3	Q4	Q1	Q2	Q3	Q4	Q1	Q2	Q3	Q4	Q1	Q2		
HY/2009/15 - CWB TUNNEL (CBTS SECTION)																									
SUBMISSIONS COMPLYING WITH EPs																									
EM&A Manual (rely on the Master EP's submission EP-364/2009/A Condition 2.9)																									
Baseline Monitoring Report (rely on the Master EP's submission EP-364/2009 Condition 3.3)																									
Monthly EM&A (rely on the masters EP's Submission, EP-364/2009/A Condition 3.4)																									
A dedicated website (rely on the master EP's submission, EP-364/2009/A Condition 4.2)																									
Management organization of main construction companies (FEP Condition 2.6)	1d	02-Oct-10	02-Oct-10																						
Work Schedule (FEP Condition 2.7)	1d	27-Oct-10	27-Oct-10																						
Location Plan (FEP Condition 2.8)	1d	27-Oct-10	27-Oct-10																						
Noise Management plan (FEP Condition 2.9)	1d	27-Oct-10	27-Oct-10																						
Landscape plan (FEP condition 2.10)	1d	31-Jan-11	31-Jan-11																						
EAST VENTILATION ADIT																									
CCT @ Portion 1, 2, 4, 6, 22	1315d	27-Sep-10	03-May-14																						
EV Adit @ Portion 4-Advance Works	526d	27-Sep-10	05-Mar-12																						
EV Adit Portion 1, 2, 6, 22	26d	22-Dec-11	16-Jan-12																						
EV Adit-based on Conforming Design	323d	15-Feb-12	02-Jan-13																						
TCBR1E (TS1 Area)																									
Diaphragm Wall Construction (incl. SI, & tests after completion)	107d	26-Apr-11	10-Aug-11																						
Excavation & Lateral Support, ELS	99d	16-Jul-11	22-Oct-11																						
Cut & Cover Tunnel Construction (incl. backfill)	78d	22-Oct-11	07-Jan-12																						
OHVD and Cable Trough (access from Portion 22)	76d	18-Dec-13	03-Mar-14																						
TCBR2 + TCBR3 (TS2 Area)																									
Diaphragm Wall Construction	118d	06-Jul-12	31-Oct-12																						
Excavation & Lateral Support, ELS	248d	06-Jul-12	10-Mar-13																						
Cut & Cover Tunnel Construction	164d	11-Mar-13	21-Aug-13																						
OHVD Cable Trough (Access from Portion 22)	150d	05-Aug-13	01-Jan-14																						
TCBR1W (TS4 Area)																									
Diaphragm Wall Construction	148d	28-Jun-11	22-Nov-11																						
Excavation & Lateral Support, ELS	319d	26-Jun-11	11-May-12																						
Landing Steps - Demolition/Reconstruct as footpath	40d	28-Jun-11	23-Aug-11																						

- ◆ Milestone
- ◆ Milestone
- ▨ Remaining Work
- ▨ Critical Remaining Work
- ▨ Actual Work

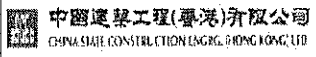
1 of 2

China State Construction Engineering (Hong Kong) Ltd.

Contract No. HY/2009/15 - Central Wan Chai By Pass - Tunnel

(CBTS Section)

Prepared by William Caluza			
Date	Revision	Checked	Approved
14-Mar-11	Revision C	ST	KL
	File: GC01a		
	(Layout:HY/2009/15: CWB - Summary)		



Activity Name	Original Duration	Planned Start	Planned Finish	2011					2012				2013				2014				2015				2016
				Q3	Q4	Q1	Q2	Q3	Q4	Q1	Q2	Q3	Q4	Q1	Q2	Q3	Q4	Q1	Q2	Q3	Q4	Q1	Q2	Q3	Q4
Rock Excavation	235d	25-Apr-12	15-Dec-12																						
ME4-Diaphragm Wall	114d	10-May-12	19-Oct-12																						
AS Logistics Area for Mined Tunneling Works	174d	01-Jun-12	07-Feb-13																						
ME4-ELS Works	212d	01-Jun-12	02-Apr-13																						
SCL Entrusted Works	291d	18-Jul-12	08-Sep-13																						
Cut & Cover Tunnel Construction (w/o TS4 +)	111d	17-Dec-12	06-Apr-13																						
ME4-RC Structure	146d	28-Jan-13	21-Aug-13																						
OHVD and Cable Trough (Access from TZ5/TPCWAE/TPCWAW)	180d	17-Jun-13	13-Dec-13																						
MINED TUNNEL																									
CHT Protection Works @ location A, B, C	342d	27-Sep-10	01-Feb-12																						
Tunnel works from West Portal (access from TPCWAE& TZ5)	418d	12-Mar-12	30-Oct-13																						
Tunnel Works from East Portal (Access from TS4 Area)	214d	30-Mar-12	01-Feb-13																						
Tunnel OHVD & Cable Trough	394d	02-Dec-13	22-May-15																						
TPCWAE																									
Drainage Diversion works along Hung Hing Road (Portion 19)	176d	15-Oct-10	24-Jun-11																						
Diaphragm Wall Construction	147d	20-May-11	13-Oct-11																						
Excavation & Lateral Support, ELS	421d	20-May-11	13-Jul-12																						
Rock Excavation	208d	12-Mar-12	03-Oct-12																						
AS Logistics Area for Mined Tunneling works	342d	12-May-12	18-Apr-13																						
Cut & Cover Tunnel Construction	130d	28-Jan-13	06-Jun-13																						
OHVD and Cable Trough (Access from TZ5/TPCWAW)	182d	18-Feb-15	18-Aug-15																						
TPCWAW & PORTION 11																									
Diaphragm Wall Construction + Portion 11	222d	25-Oct-13	03-Jun-14																						
Excavation & Lateral Support, ELS	478d	25-Oct-13	14-Feb-15																						
Cut & Cover Tunnel Construction	143d	30-Dec-14	21-May-15																						
OHVD and Cable Trough Installation (Access from Portion 11)	235d	22-May-15	11-Jan-16																						

- ◆ Milestone
- ◆ Milestone
- Remaining Work
- Critical Remaining Work
- Actual Work

2 of 2

China State Construction Engineering (Hong Kong) Ltd.
Contract No. HY/2009/15 - Central Wan Chai By Pass - Tunnel
(CBTS Section)

Prepared by William Caluza			
Date	Revision	Checked	Approved
14-Mar-11	Revision C	ST	KL
	File: 0001a		
	(Layout: HY/2009/15: CWB - Summary)		



Data Date: 20-Aug-11
Print Date: 29-Aug-11
DCP3-2

HY/2009/18 Central - Wan Chai Bypass (Central Interchange)



TASK filter: HL

Activity Name	Start	Finish	Total Float	2011	2012	2013	2014	2015	2016	2017
				JUN	JUL	AUG	SEP	OCT	NOV	DEC
CWB - Central Interchange										
HIGH LEVEL PROGRAMME										
DATE FOR COMMENCEMENT & COMPLETION										
Contract Commencement	21-Sep-10 A	03-Jan-11 A								
Contract Construction Completion		30-Jan-16	365							
Contract DLP and Establishment Works Completion		29-Jan-17	0							
PRELIMINARIES										
Preliminary Submissions / Approvals	21-Sep-10 A	03-Jan-11 A								
Commence Site Mobilisation	03-Jan-11 A									
Mobilise, Hoarding & Site Clearance	03-Jan-11 A	14-May-11 A								
PORTION IV WORKS										
CWB Tunnel CH1480 to CH1580										
Site Investigation	11-May-11 A	15-Sep-11	28							
Construct Guide Walls	27-Jun-11 A	30-Sep-11	20							
Construct D-Wall / Barrettes	26-Aug-11	19-Apr-12	20							
ELS Works	20-Apr-12	11-Oct-12	19							
Construct CWB Tunnel & Ventilation Building	12-Oct-12	21-Jun-13	19							
Works inside CWB Tunnel	22-Jun-13	24-Sep-13	18							
KD-8 Complete		13-Oct-13*	0							
CWB Tunnel CH1580 to CH1646										
Construction Diversion for Finance Street	05-Sep-11	22-Oct-11	42							
East End of Finance St. Closed		23-Oct-11	219							
Site Investigation	30-Jul-11 A	09-Dec-11	126							
Construct Guide Walls	30-Jul-11 A	04-Jan-12	97							
Construct D-Wall / Barrettes	19-Mar-12	30-Jul-12	18							
ELS Works	31-Jul-12	19-Dec-12	22							
Construct CWB Tunnel	20-Dec-12	16-Apr-13	20							
Works inside CWB Tunnel	10-Aug-13	13-Dec-13	161							
KD-7 Complete		23-May-14*	0							
CWB Tunnel CH1646 to CH1685										
Man Yiu St. Diverted (Possess Portion IIA, IIB)	01-Feb-12	01-Feb-12	52							
Site Clearance & Divert Existing Utilities	01-Feb-12	29-Mar-12	60							
Site Investigation	30-Mar-12	04-May-12	54							
Sheet Pile / Pipe Pile / Grouting	26-Mar-12	29-May-12	63							
Construct Guide Walls	05-May-12	02-Jun-12	55							
Construct Barrettes	04-Jun-12	04-Jul-12	52							
Temporary Works to Support C/W Pipes	30-May-12	25-Jun-12	61							
ELS Works	05-Jul-12	08-Dec-12	56							
Demolish & Reconstruct CWB Tunnel	07-Dec-12	08-Mar-13	59							
Works Inside CWB Tunnel	22-Jun-13	23-Oct-13	212							
Surface Works										
Backfill, U/G Services, Roadworks & Landscaping	25-Jan-13	11-Jan-14	295							
KD-6 Complete		03-Nov-14*	0							
PORTION III WORKS										
CWB Tunnel CH1685 to CH1704										
Access to CRIII Works Area	01-Sep-11		56							
Works Area within CRIII Preparation	01-Sep-11	31-Dec-11	61							
Site Investigation	01-Feb-12	13-Mar-12	374							
Construct Guide Walls	29-Feb-12	30-Mar-12	379							
Construct D-Wall / Barrettes (thru old seawall)	31-Mar-12	12-Sep-12	376							
Construct Man Yiu Street Temporary Diversion	24-Nov-11	31-Jan-12	52							
ELS Works	13-Sep-12	19-Dec-12	377							
Construct CWB Tunnel (excl. roof slab)	20-Dec-12	23-Mar-13	375							
Break into Existing CWB Tunnel	25-Mar-13	25-Apr-13	377							
Construct CWB Tunnel Roof Slab	09-Jul-13	19-Aug-13	304							
Works inside CWB Tunnel	20-Aug-13	05-Nov-13	269							
CWB Tunnel CH1704 to CH1825										
KD-4 Complete		01-Aug-14*	0							
Works inside CWB Tunnel	16-Oct-12	09-Oct-13	271							
CWB Tunnel CH1825 to CH2600										
Works inside CWB Tunnel	10-Apr-12	02-Sep-13	100							
KD-5 Complete		31-Jan-14*	0							
Surface Works										
Road P1 Roadworks & Landscaping	20-Aug-13	19-Mar-14	324							
Man Yiu St. Widening Roadworks & Landscaping	31-Jul-13	27-Nov-13	415							
KD-3 Complete		06-Feb-15*	0							
PORTION V WORKS										
Man Kwong St. WB Widening										
Mobilization, Set up, Utilities Diversion, Tree	03-Jan-11 A	03-Jun-11 A								
Construct Trough B Structure - Phase 1	20-May-11 A	04-Aug-12	587							
Construct Trough B Structure - Phase 2b	12-Oct-11	06-Sep-13	335							
Temporary Drainage Diversion	15-Jul-13	23-Oct-13	19							
Construct Trough B Structure - Phase 2a	24-Oct-13	26-Jul-14	33							
Construct Trough B Structure - West End Portion	21-Jul-14	15-Oct-14	19							
Portion VI Access Date	12-Nov-12		322							
Man Kwong St. WB Widening	12-Nov-12	05-Apr-13	320							
Construct Retaining Wall D	29-Jul-13	20-Dec-13	90							
Remaining Roadworks & Landscaping	16-Nov-13	15-Jul-14	111							
KD-9 Complete		03-Nov-14*	0							
PORTION VI WORKS										
Man Kwong St. WB Widening										
Portion VI Access Date	12-Nov-12		219							
Man Kwong St. WB Widening	12-Nov-12	05-Apr-13	209							
Retaining Walls F	15-Oct-14	02-Jun-15	95							
Retaining Walls G	12-Nov-12	12-Oct-13	693							
Bridge B	12-Nov-12	25-Aug-14	523							
Trough A	21-Dec-13	14-Oct-14	63							
Elevated Layby at Rumsey St. Flyover	23-Apr-14	29-Jul-15	185							
Bridge A	12-Nov-12	01-Aug-14	157							
Open Stp Road D / Man Po St.		14-Oct-14	838							
Retaining Wall A & B	15-Oct-14	16-Jun-15	91							
Remaining U/G Services, Roadworks & Landscaping	07-Nov-14	14-Sep-15	92							
KD-10 Complete		30-Jan-16*	0							
KD-16 Complete		30-Jan-16*	0							
Landscaping Establishment (Last Area)	15-Sep-15	13-Sep-16	138							
KD-15 Complete		29-Jan-17	0							

Data Date: 20-Apr-12
 Print Date: 25-Apr-12

HY/2009/18 Central - Wan Chai Bypass (Central Interchange)

TASK filters: 3 Months, Not HL.



Activity ID	Activity Name	Original Durati...	Start	Finish	Total Float	2012			
						Apr	May	Jun	Jul

Updated 2012-04-20 CWB - Central Interchange (2011-12-23) Revised Detailed Wo...

PRELIMINARIES

Access Dates & Milestones

Portion Possession Dates

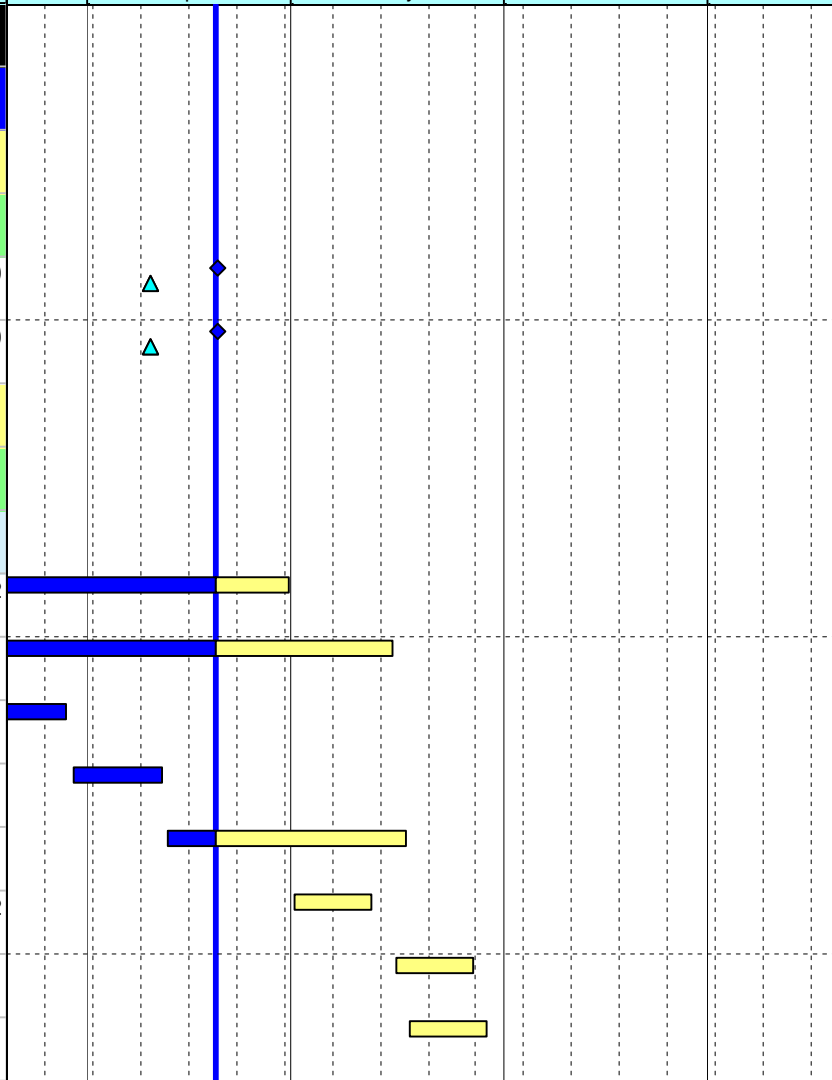
1285	Portion III B Available (DAY-567)	0	20-Apr-12*		-10				
1295	Portion III C Available (DAY-567)	0	20-Apr-12*		-10				

Submissions & Approvals

Specified Plans

MTRC Impact Assessment Report

1558	Resubmit MTRC Impact Assessment Report - Cut & CoverTunnel	28	17-Feb-12 A	30-Apr-12	92				
1501	Resubmit MTRC Impact Assessment Report - Phase 2	12	19-Feb-12 A	15-May-12	138				
1371	Resubmit MTRC Impact Assessment Report - MYS Tunnel	28	25-Feb-12 A	29-Mar-12 A					
1534	MTRC Impact Assessment Report - Engineer / MTRC Review & Comment	12	30-Mar-12 A	12-Apr-12 A					
1535	Resubmit MTRC Impact Assessment Report - MYS Tunnel	28	13-Apr-12 A	17-May-12	121				
1559	MTRC Impact Assessment Report - Engineer / MTRC Review & Comment (Cut & Cover)	12	01-May-12	12-May-12	92				
1504	MTRC Impact Assessment Report - Engineer / MTRC Review & Comment (Phase 2)	12	16-May-12	27-May-12	138				
1553	MTRC Impact Assessment Report - Engineer / MTRC Review & Comment (MYS)	12	18-May-12	29-May-12	121				



- ◆ Current Milestone
- Critical Remaining Work
- ▬ Level of Effort
- ▬ Remaining Work
- ▲ Baseline Milestone
- ▬ Project Baseline
- ▬ Actual Work

Leighton Contractors (Asia) Limited Programme Update 19 (Apr 2012) THREE MONTH ROLLING

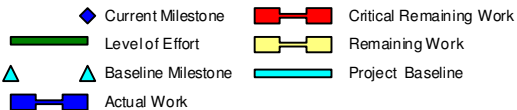
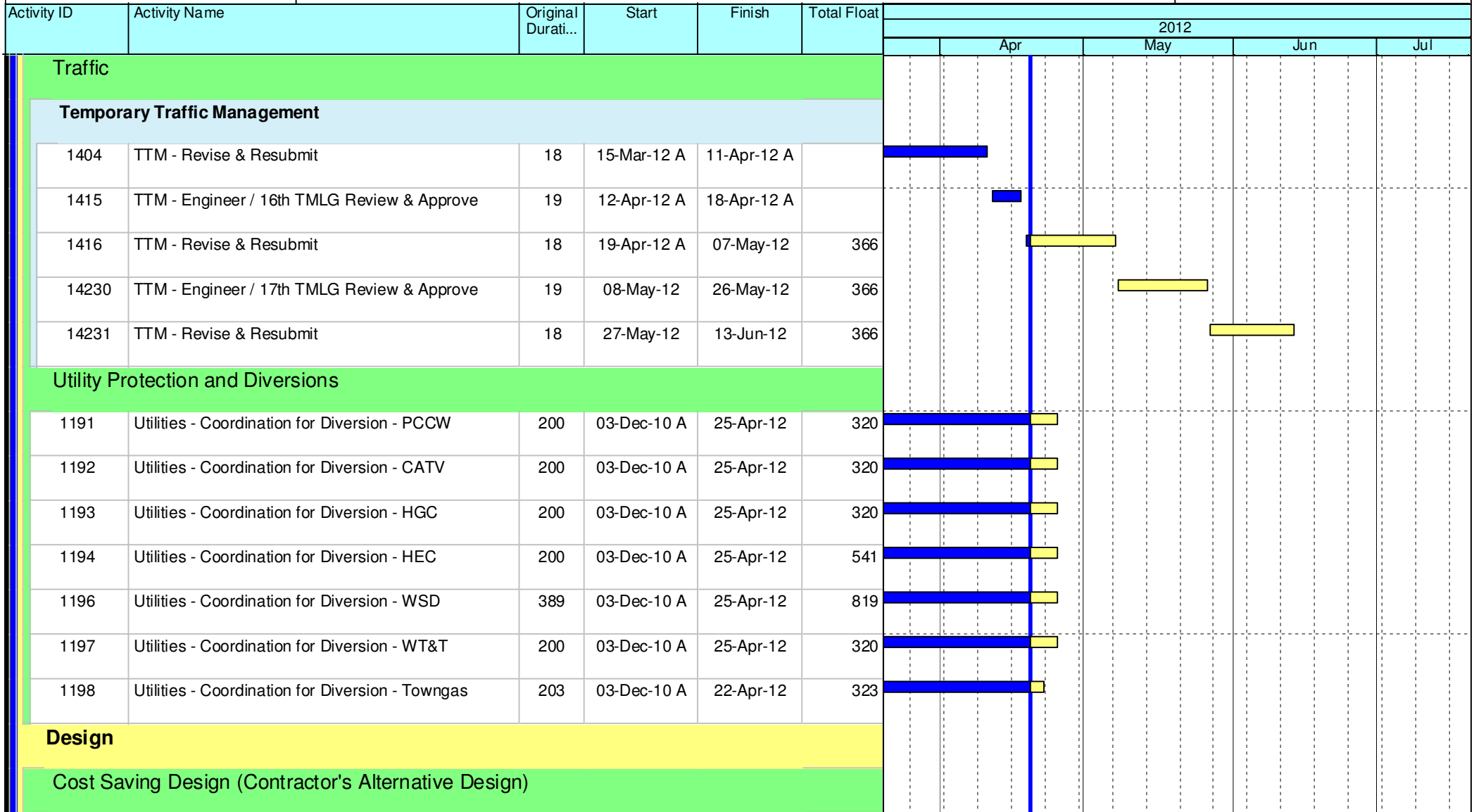
Project ID: U019
 Baseline: DCP3-3
 Layout: Update Three Month Rolling U018
 Page 1 of 12

U019 Programme Update 19 (Apr 2012)			
Date	Revision	Checked	Approv...
21-Apr-12	U019	RC	DS
21-Mar-12	U018	RC	DS

HY/2009/18 Central - Wan Chai Bypass (Central Interchange)



TASK filters: 3 Months, Not HL.



Leighton Contractors (Asia) Limited Programme Update 19 (Apr 2012) THREE MONTH ROLLING

Project ID: U019
 Baseline: DCP3-3
 Layout: Update Three Month Rolling U018
 Page 2 of 12

U019 Programme Update 19 (Apr 2012)			
Date	Revision	Checked	Approv...
21-Apr-12	U019	RC	DS
21-Mar-12	U018	RC	DS

HY/2009/18 Central - Wan Chai Bypass (Central Interchange)



TASK filters: 3 Months, Not HL.

Activity ID	Activity Name	Original Durati...	Start	Finish	Total Float	2012				
						Apr	May	Jun	Jul	
3728	CSD - Engineer Review & Approve Alternative Design	28	27-Jan-11 A	25-Apr-12	1740					
Temporary Works Design										
ELS - Approach Ramp (Trough and Retaining Walls)										
1578	ELS - ELS Trough and Retaining Walls Re-Submit Design - Phase 2	12	19-Feb-12 A	15-May-12	138					
1596	ELS - Resubmit Trough Construction Method Statement	12	17-Mar-12 A	28-Mar-12 A						
1597	ELS - Trough Construction Method Statement Engineer Review & Comment	12	29-Mar-12 A	11-Apr-12 A						
1579	ELS - ELS Trough and Retaining Walls Engineer Review & Approve - Phase 2	12	16-May-12	27-May-12	138					
Utilities Support Bridge (Man Yiu Street)										
1602	USB - Resubmit Cooling Water Main Bridge Design	28	16-Mar-12 A	12-Apr-12 A						
1603	USB - Cooling Water Main Bridge Engineer Review & Approval	28	12-Apr-12 A	17-May-12	108					
ELS - CWB / Ventilation Building Portion (CH1480 - CH1580)										
1498	ELS - ELS CWB / Top Down Slab Method Statement Engineer Review & Approval	28	09-Mar-12 A	06-May-12	8					
1130	ELS - ELS CWB / Ventilation Building Resubmit Method Statement	15	15-Mar-12 A	10-Apr-12 A						
1529	ELS - ELS CWB / Ventilation Building Engineer Review & Approval	28	17-Mar-12 A	30-Apr-12	14					
1556	ELS - ELS CWB / Vent Building - Engineer Issue Design Change Instruction Ref. CWB/AL/05/2012/0005/0005/0005/0005/0005/0005	0		29-Mar-12 A						
1557	ELS - ELS CWB / Vent Building - ELS Design Re-Submission (Based On Design Change)	28	30-Mar-12 A	26-Apr-12	1739					
1132	ELS - ELS CWB / Ventilation Building Engineer Method Statement Review & Approval	28	11-Apr-12 A	29-Apr-12	22					

	Current Milestone		Critical Remaining Work
	Level of Effort		Remaining Work
	Baseline Milestone		Project Baseline
	Actual Work		

Leighton Contractors (Asia) Limited Programme Update 19 (Apr 2012) THREE MONTH ROLLING

Project ID: U019
 Baseline: DCP3-3
 Layout: Update Three Month Rolling U018
 Page 3 of 12

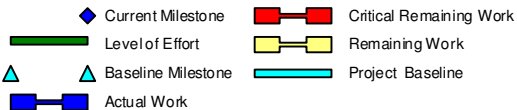
U019 Programme Update 19 (Apr 2012)			
Date	Revision	Checked	Approv...
21-Apr-12	U019	RC	DS
21-Mar-12	U018	RC	DS

HY/2009/18 Central - Wan Chai Bypass (Central Interchange)



TASK filters: 3 Months, Not HL.

Activity ID	Activity Name	Original Durati...	Start	Finish	Total Float	2012					
						Apr	May	Jun	Jul		
ELS - CWB Man Yiu Street Portion & Tunnel Modification Works (CH1646 - CH1685)											
3932	ELS - ELS CWB Man Yiu Street Portion Design Resubmission	15	25-Feb-12 A	29-Mar-12 A		█					
1593	ELS - ELS CWB Man Yiu Street Portion Method Statement Resubmission	28	14-Mar-12 A	17-May-12	105	█	█				
3933	ELS - ELS CWB Man Yiu Street Portion Engineer Review & Approve	28	30-Mar-12 A	12-Apr-12 A		█					
1581	ELS - ELS CWB Man Yiu Street Portion Design Resubmission	15	13-Apr-12 A	04-May-12	28		█				
1582	ELS - ELS CWB Man Yiu Street Portion Engineer Review & Approve	28	05-May-12	01-Jun-12	28			█			
1595	ELS - ELS CWB Man Yiu Street Portion Engineer Review & Approve	28	18-May-12	14-Jun-12	105			█			
ELS - CWB Cut & Cover Portion (CH1580 - CH1646)											
1497	ELS - ELS CWB CH1580-CH1646 Portion Re-submit Design	15	17-Feb-12 A	30-Apr-12	17	█	█				
3937	ELS - ELS CWB CH1580-CH1646 Portion Prepare Method Statement	15	01-May-12	15-May-12	17		█				
1496	ELS - ELS CWB CH1580-CH1646 Portion Re-submit Design Engineer Review & Comment	12	01-May-12	12-May-12	48		█				
3939	ELS - ELS CWB CH1580-CH1646 Portion Method Statement Engineer Review & Approval	28	16-May-12	12-Jun-12	17		█	█			
ELS - CWB CRIII Portion (CH1685 - CH1704)											
1604	ELS - ELS CRIII Portion Resubmit Design	28	25-Feb-12 A	29-Mar-12 A		█					
1605	ELS - ELS CRIII Portion Engineer Review & Approve	28	30-Mar-12 A	12-Apr-12 A		█					
1606	ELS - ELS CRIII Portion Resubmit Design	28	12-Apr-12 A	04-May-12	471		█				
3943	ELS - ELS CRIII Portion Prepare Method Statement	15	20-Apr-12	04-May-12	471		█				



Leighton Contractors (Asia) Limited Programme Update 19 (Apr 2012) THREE MONTH ROLLING

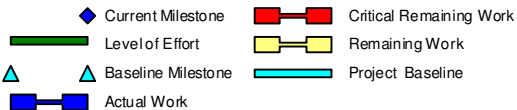
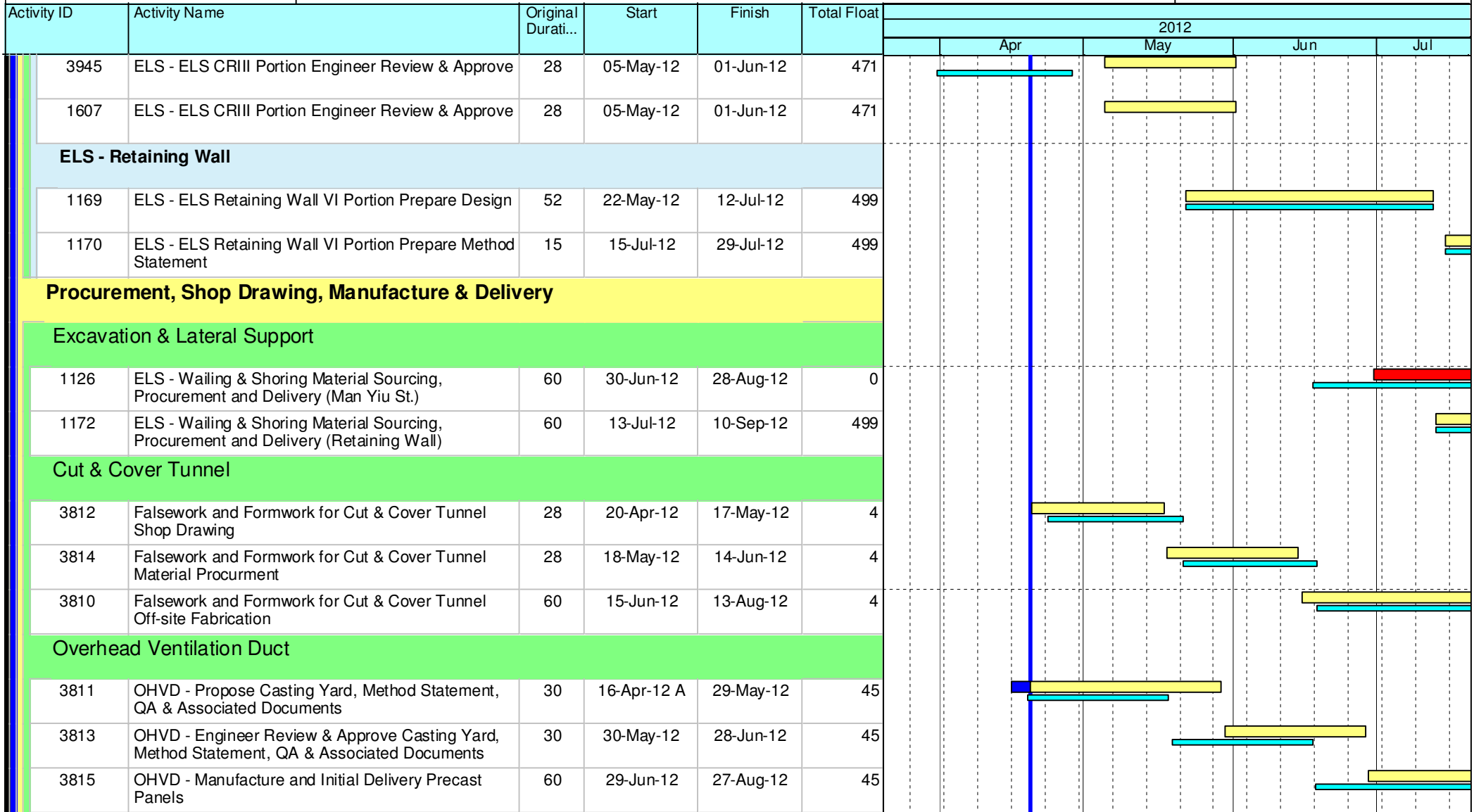
Project ID: U019
 Baseline: DCP3-3
 Layout: Update Three Month Rolling U018
 Page 4 of 12

U019 Programme Update 19 (Apr 2012)			
Date	Revision	Checked	Approv...
21-Apr-12	U019	RC	DS
21-Mar-12	U018	RC	DS

HY/2009/18 Central - Wan Chai Bypass (Central Interchange)



TASK filters: 3 Months, Not HL.



Leighton Contractors (Asia) Limited Programme Update 19 (Apr 2012) THREE MONTH ROLLING

Project ID: U019
 Baseline: DCP3-3
 Layout: Update Three Month Rolling U018
 Page 5 of 12

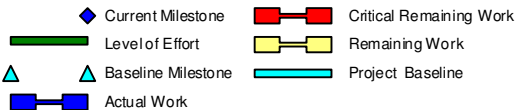
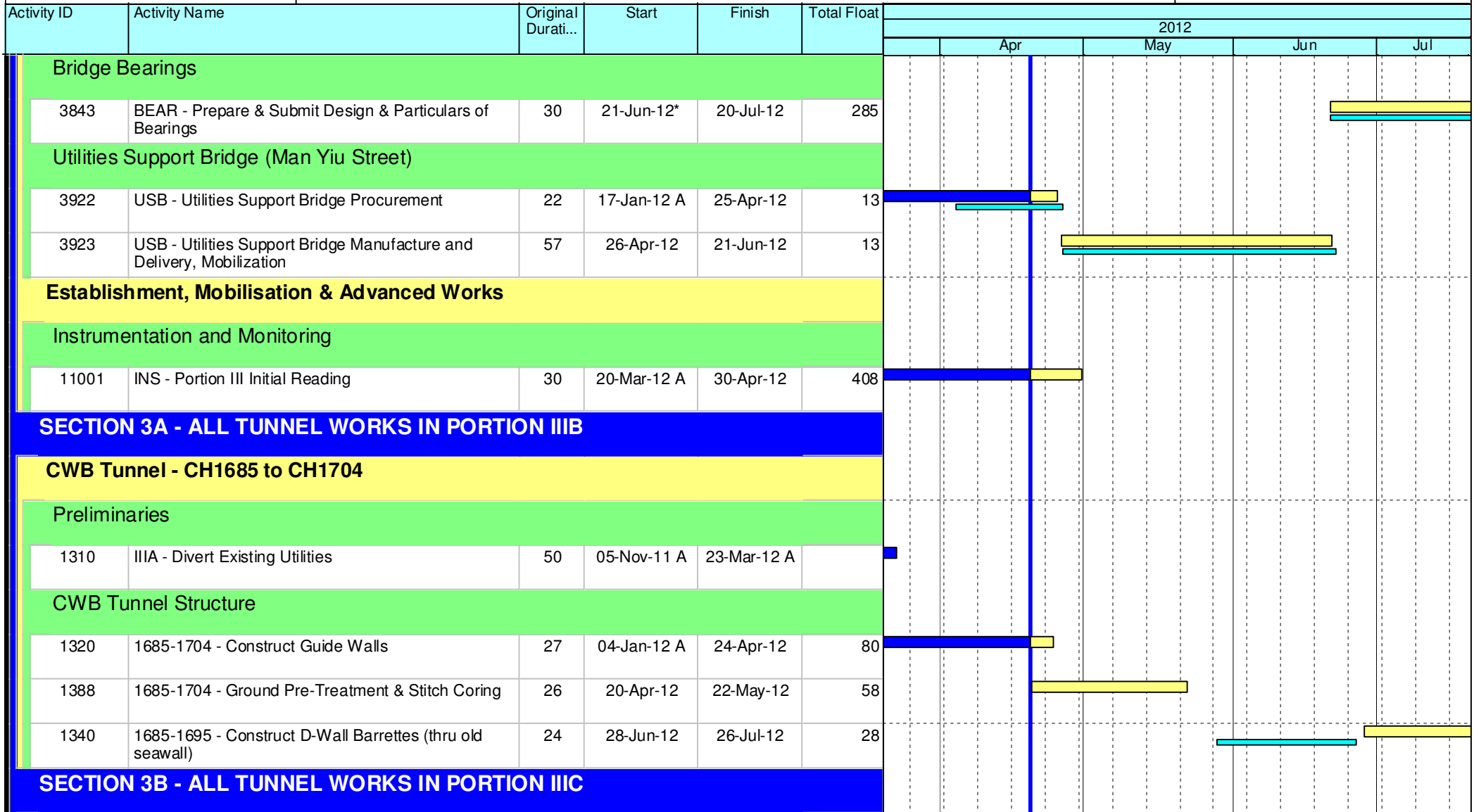
U019 Programme Update 19 (Apr 2012)			
Date	Revision	Checked	Approv...
21-Apr-12	U019	RC	DS
21-Mar-12	U018	RC	DS

Data Date: 20-Apr-12
 Print Date: 25-Apr-12

HY/2009/18 Central - Wan Chai Bypass (Central Interchange)



TASK filters: 3 Months, Not HL.



Leighton Contractors (Asia) Limited Programme Update 19 (Apr 2012) THREE MONTH ROLLING

Project ID: U019
 Baseline: DCP3-3
 Layout: Update Three Month Rolling U018
 Page 6 of 12

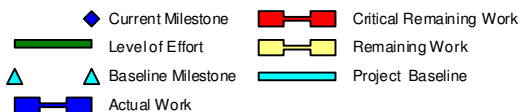
U019 Programme Update 19 (Apr 2012)			
Date	Revision	Checked	Approv...
21-Apr-12	U019	RC	DS
21-Mar-12	U018	RC	DS

HY/2009/18 Central - Wan Chai Bypass (Central Interchange)



TASK filters: 3 Months, Not HL.

Activity ID	Activity Name	Original Durati...	Start	Finish	Total Float	2012				
						Apr	May	Jun	Jul	
CWB Tunnel - CH1825 to CH2600										
CWB Tunnel Internal Works										
1368	1825-2600 - Access Available via Roof Opening at CH1700	0		20-Apr-12	38					
1370	2213-2600 - Construct Insitu Roof Kickers	78	20-Apr-12	24-Jul-12	38					
SECTION 4B - ALL TUNNEL WORKS IN PORTION IVC, IVD, IVE & IVF										
CWB Tunnel - CH1480 to CH1580										
Preliminaries										
1379	IVC - Temp. Divert Finance St.	12	20-Apr-12	05-May-12	51					
1346	IVC - Reinstate Drainage along Finance Street (Stage 2)	26	07-May-12	05-Jun-12	51					
1352	IVC - Reinstate Finance Street (Stage2 Area)	12	06-Jun-12	19-Jun-12	51					
CWB Tunnel Structure										
11006	1480-1580 - Construct D-Wall / Barrettes (Exclude W2D11)	74	27-Sep-11 A	20-Mar-12 A						
1571	1480-1580 - Sonic Test, Interface Core Test & Full Core Test	24	02-Dec-11 A	24-Apr-12	15					
1409	1480-1580 - Construct D-Wall (W2D11)	10	05-Mar-12 A	20-Mar-12 A						
1468	1480-1580 - Construct D-Wall (W2D18)	10	07-Mar-12 A	20-Mar-12 A						
1411	1480-1580 - Slurry Wall (Ch1480)	15	08-Mar-12 A	30-Mar-12 A						
1491	1480-1580 - Installation of Pump Well	24	09-Mar-12 A	20-Apr-12 A						



Leighton Contractors (Asia) Limited Programme Update 19 (Apr 2012) THREE MONTH ROLLING

Project ID: U019
 Baseline: DCP3-3
 Layout: Update Three Month Rolling U018
 Page 7 of 12

U019 Programme Update 19 (Apr 2012)			
Date	Revision	Checked	Approv...
21-Apr-12	U019	RC	DS
21-Mar-12	U018	RC	DS

HY/2009/18 Central - Wan Chai Bypass (Central Interchange)



TASK filters: 3 Months, Not HL.

Activity ID	Activity Name	Original Durati...	Start	Finish	Total Float	2012				
						Apr	May	Jun	Jul	
1408	1480-1580 - Construct D-Wall (W2D8)	11	17-Mar-12 A	31-Mar-12 A						
1575	1480-1580 - Slurry Wall (Ch1580)	14	10-Apr-12 A	23-Apr-12	4					
1347	1480-1580 - Excavate for Top Slabs	18	18-Apr-12 A	08-May-12	5					
1572	1480-1580 - Pump Test	12	24-Apr-12	09-May-12	4					
1349	1480-1580 - Construct Top Slabs	24	09-May-12	05-Jun-12	5					
1580	1480-1580 - Excavate & Lateral Support to Bottom of CWB Tunnel(1480-1600)	100	10-May-12	05-Sep-12	4					
11300	1480-1580 - Excavate 1st Layer	36	10-May-12	20-Jun-12	4					
11320	1480-1580 - Erect 1st Layer Support	33	30-May-12	09-Jul-12	4					
1517	1480-1580 - Excavate 2nd Layer	15	10-Jul-12	26-Jul-12	4					
1519	1480-1580 - Erect 2nd Layer Support	15	17-Jul-12	02-Aug-12	4					

SECTION 4A - ALL TUNNEL WORKS IN PORTION IVA, IVB, IVG & IVH

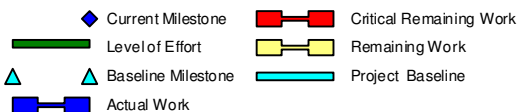
CWB Tunnel - CH1580 to CH1646

Preliminaries

1657	IVA & IVG - Divert Existing Utilities WSD, HGC	26	03-Apr-12 A	10-Apr-12 A						
1566	IVA & IVG - Divert Existing Utilities HEC (Changeover)	29	20-Apr-12	25-May-12	0					

CWB Tunnel Structure

1663	1580-1646 - Pre-drilling (Site Investigation) W1D20 - W1D30, BC12 - BC15	30	30-Jul-11 A	30-Mar-12 A						
------	--	----	-------------	-------------	--	--	--	--	--	--



Leighton Contractors (Asia) Limited Programme Update 19 (Apr 2012) THREE MONTH ROLLING

Project ID: U019
 Baseline: DCP3-3
 Layout: Update Three Month Rolling U018
 Page 8 of 12

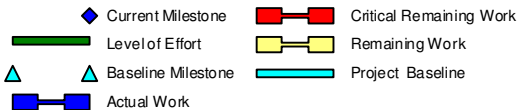
U019 Programme Update 19 (Apr 2012)			
Date	Revision	Checked	Approv...
21-Apr-12	U019	RC	DS
21-Mar-12	U018	RC	DS

HY/2009/18 Central - Wan Chai Bypass (Central Interchange)



TASK filters: 3 Months, Not HL.

Activity ID	Activity Name	Original Durati...	Start	Finish	Total Float	2012				
						Apr	May	Jun	Jul	
1664	1580-1646 - Construct Guide Walls W1D20 - W1D30, BC12 - BC15	48	30-Jul-11 A	24-Apr-12	29					
1341	1580-1646 - Construct Guide Walls (W2D20 - W2D30) Exclude W2D28	18	12-Dec-11 A	24-Apr-12	41					
1665	1580 - 1646 - Construct D-Wall / Barrettes 1600 - 1646	46	09-Jan-12 A	13-Jun-12	0					
1387	1580 - 1646 - Construct Utilities Bridges	26	08-Mar-12 A	02-Apr-12 A						
1482	1580 - 1646 - Construct D-Wall (W1D24)	5	19-Mar-12 A	24-Mar-12 A						
1487	1580 - 1646 - Construct D-Wall (W2D23)	12	20-Mar-12 A	03-Apr-12 A						
1485	1580 - 1646 - Construct D-Wall (W2D20)	6	22-Mar-12 A	28-Mar-12 A						
1483	1580 - 1646 - Construct D-Wall (W1D23)	14	27-Mar-12 A	19-Apr-12 A						
1488	1580 - 1646 - Construct D-Wall (W2D19)	6	29-Mar-12 A	05-Apr-12 A						
1509	1580 - 1646 - Construct D-Wall (BC13)	16	29-Mar-12 A	05-May-12	1					
1511	1580 - 1646 - Construct D-Wall (BC12)	16	11-Apr-12 A	27-Apr-12	6					
1515	1580 - 1646 - Construct D-Wall (BC11)	14	30-Apr-12	16-May-12	24					
1513	1580 - 1646 - Construct D-Wall (BC14)	12	07-May-12	19-May-12	1					
1666	1580-1646 - Slurry Wall	24	16-May-12	12-Jun-12	1					
1567	1580 - 1646 - Construct D-Wall (W1D30)	8	26-May-12	04-Jun-12	0					
1568	1580 - 1646 - Construct D-Wall (W1D28)	8	29-May-12	06-Jun-12	0					
1569	1580 - 1646 - Construct D-Wall (W1D29)	8	31-May-12	08-Jun-12	0					



Leighton Contractors (Asia) Limited Programme Update 19 (Apr 2012) THREE MONTH ROLLING

Project ID: U019
 Baseline: DCP3-3
 Layout: Update Three Month Rolling U018
 Page 9 of 12

U019 Programme Update 19 (Apr 2012)			
Date	Revision	Checked	Approv...
21-Apr-12	U019	RC	DS
21-Mar-12	U018	RC	DS

HY/2009/18 Central - Wan Chai Bypass (Central Interchange)



TASK filters: 3 Months, Not HL.

Activity ID	Activity Name	Original Durati...	Start	Finish	Total Float	2012				
						Apr	May	Jun	Jul	
1573	1580 - 1646 - Construct D-Wall (W2D30)	8	02-Jun-12	11-Jun-12	77					
1574	1580 - 1646 - Construct D-Wall (W2D29)	8	05-Jun-12	13-Jun-12	77					
1667	1580-1646 - Sonic Test, Interface Core Test & Full Core Test	24	14-Jun-12	13-Jul-12	25					
1668	1580-1646 - Pump Test	12	14-Jun-12	28-Jun-12	1					
1391	1580-1646 - Excavate Top Slab	18	29-Jun-12	20-Jul-12	1					
CWB Tunnel - CH1646 to CH1685										
CWB Tunnel Structure										
2540	1646-1685 - Pre-drilling (Site Investigation)	25	15-Dec-11 A	23-Apr-12	9					
2550	1646-1685 - Construct Guide Walls	25	20-Apr-12	21-May-12	4					
1389	1646-1685 - Ground Treatment	12	24-Apr-12	09-May-12	14					
2560	1646-1685 - Construct Barrettes BC16-BC18, BC21, BC22	27	26-May-12	27-Jun-12	0					
1561	1646-1685 - Construct Barrettes BC21	12	26-May-12	08-Jun-12	0					
1562	1646-1685 - Construct Barrettes BC22	12	30-May-12	12-Jun-12	66					
1563	1646-1685 - Construct Barrettes BC16	12	04-Jun-12	16-Jun-12	66					
1564	1646-1685 - Construct Barrettes BC17	12	08-Jun-12	21-Jun-12	66					
2705	1646-1685 - Install Pipe/Sheet Pile Wall	50	09-Jun-12	08-Aug-12	0					
1565	1646-1685 - Construct Barrettes BC18	12	13-Jun-12	27-Jun-12	66					

- ◆ Current Milestone
- Critical Remaining Work
- ▬ Level of Effort
- ▬ Remaining Work
- ▲ Baseline Milestone
- ▬ Project Baseline
- ▬ Actual Work

Leighton Contractors (Asia) Limited Programme Update 19 (Apr 2012) THREE MONTH ROLLING

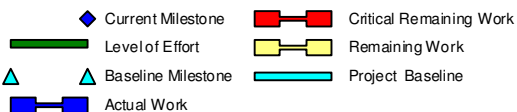
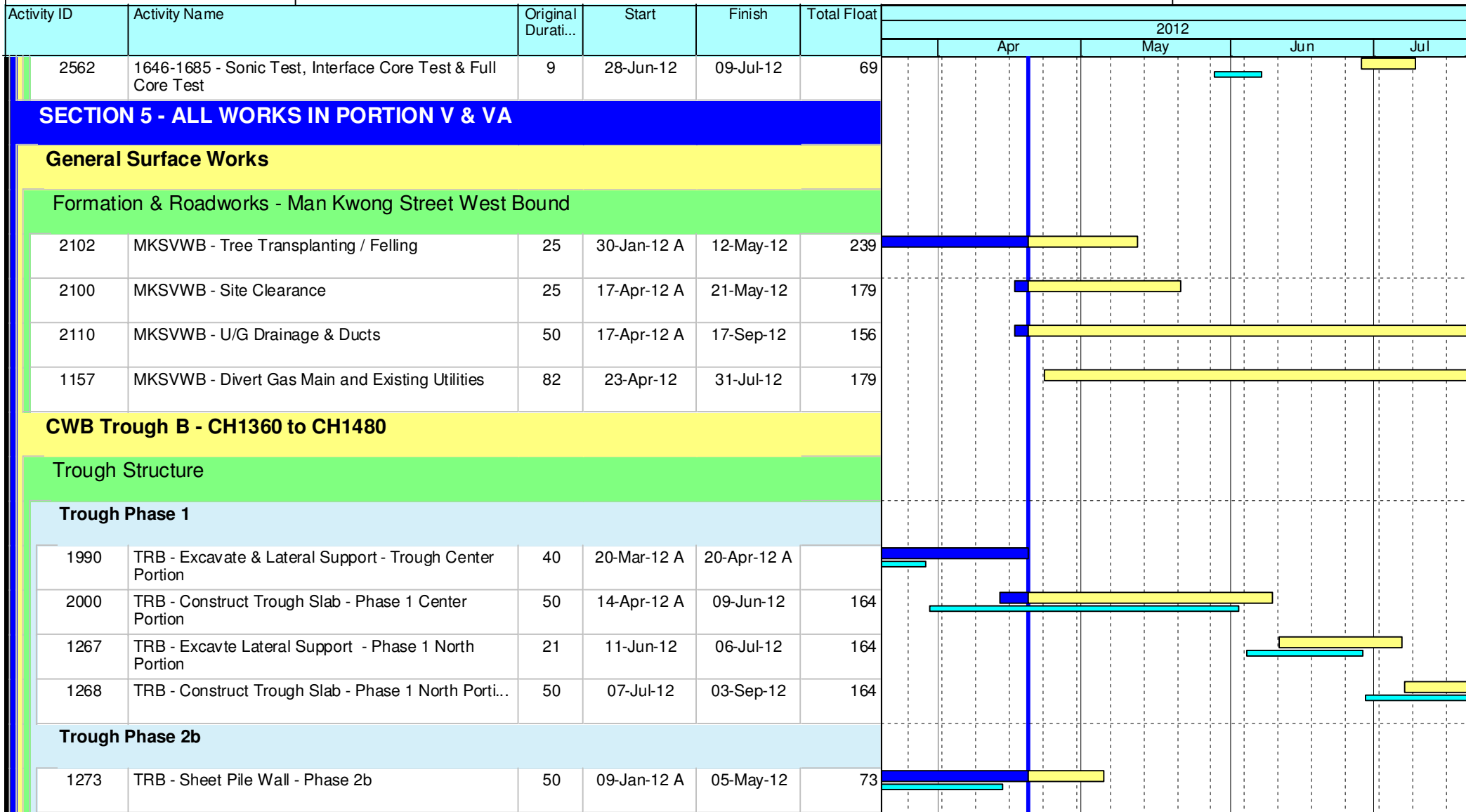
Project ID: U019
 Baseline: DCP3-3
 Layout: Update Three Month Rolling U018
 Page 10 of 12

U019 Programme Update 19 (Apr 2012)			
Date	Revision	Checked	Approv...
21-Apr-12	U019	RC	DS
21-Mar-12	U018	RC	DS

HY/2009/18 Central - Wan Chai Bypass (Central Interchange)



TASK filters: 3 Months, Not HL.



Leighton Contractors (Asia) Limited Programme Update 19 (Apr 2012) THREE MONTH ROLLING

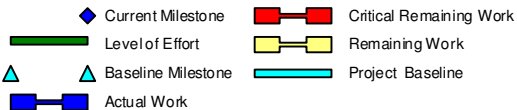
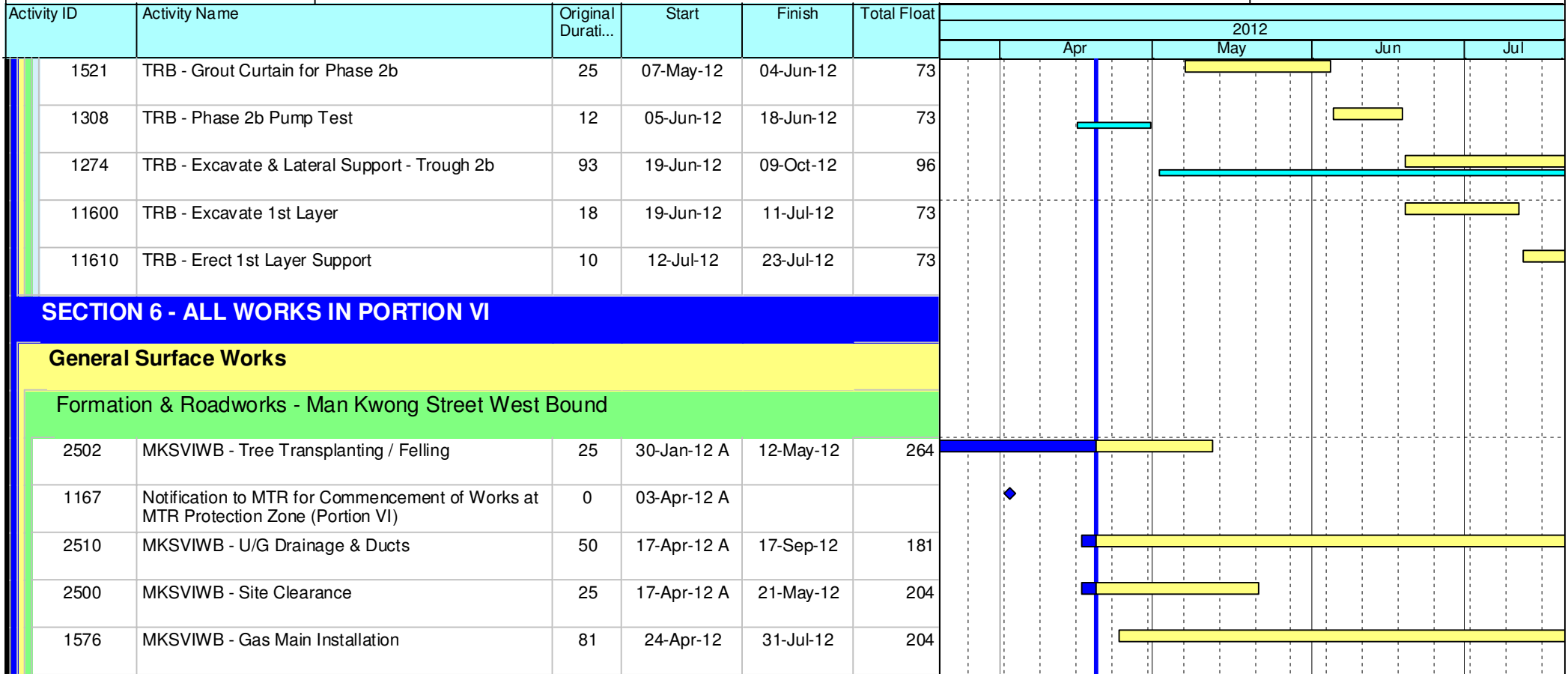
Project ID: U019
 Baseline: DCP3-3
 Layout: Update Three Month Rolling U018
 Page 11 of 12

U019 Programme Update 19 (Apr 2012)			
Date	Revision	Checked	Approv...
21-Apr-12	U019	RC	DS
21-Mar-12	U018	RC	DS

HY/2009/18 Central - Wan Chai Bypass (Central Interchange)



TASK filters: 3 Months, Not HL.



Leighton Contractors (Asia) Limited Programme Update 19 (Apr 2012) THREE MONTH ROLLING

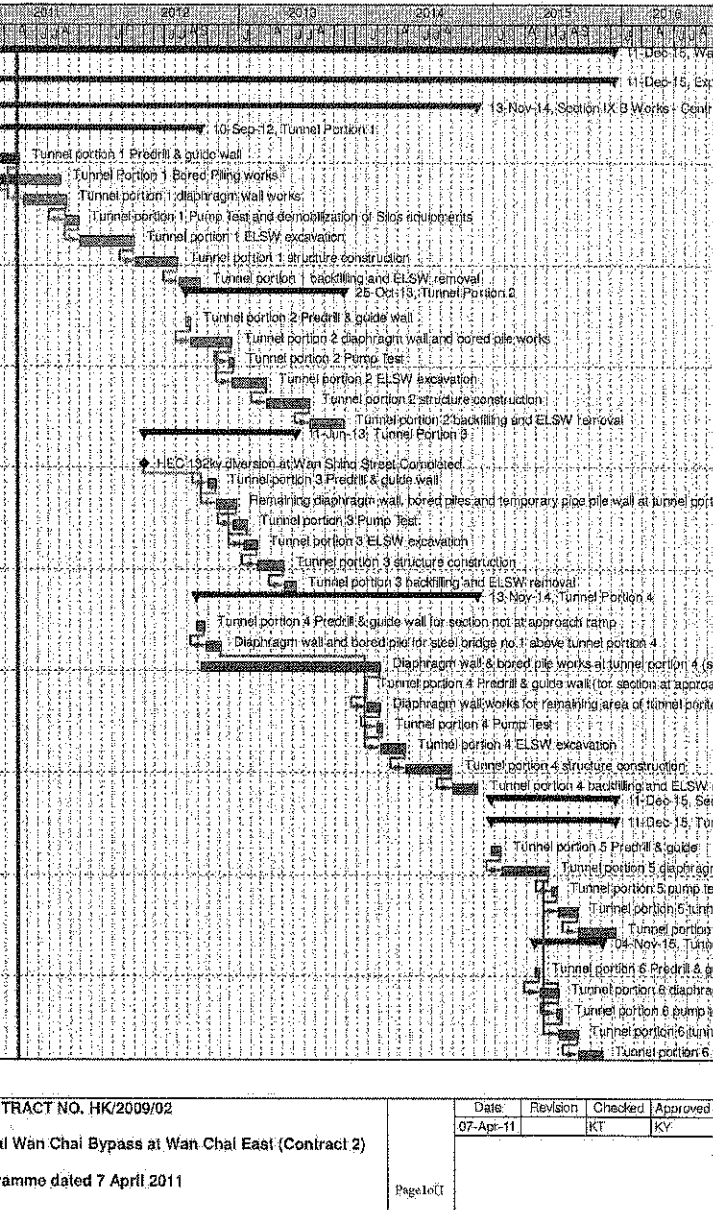
Project ID: U019
Baseline: DCP3-3
Layout: Update Three Month Rolling U018
Page 12 of 12

U019 Programme Update 19 (Apr 2012)			
Date	Revision	Checked	Approv...
21-Apr-12	U019	RC	DS
21-Mar-12	U018	RC	DS

Wan Chai Development Phase II - Central - Wan Chai
Bypass at Wan Chai East CONTRACT HK/2009/02

CHUN WO - CRGL JV

Activity ID	Activity Name	OD	Start	Finish	% Planned	2011	2012	2013	2014	2015	2016
Wan Chai Development Phase II - Central - Wan Chai Bypass at Wan Chai East											
Expanded and More Detailed Initial Works Programme											
Section IX B Works - Central - Wan Chai Bypass Tunnel Structure from chainage 3400 to eastern tunnel											
Tunnel Portion 1											
S9B-T1-0005	Tunnel portion 1 Predrill & guide wall	10	18-Feb-11	13-Apr-11	40%						
S9B-T1-0007	Tunnel Portion 1 Bored Piling works	105	09-Feb-11	08-Aug-11	0%						
S9B-T1-0010	Tunnel portion 1 diaphragm wall works	105	26-Apr-11	27-Aug-11	0%						
S9B-T1-0015	Tunnel portion 1 Pump Test and demobilization of Slos equipments	35	20-Aug-11	30-Sep-11	0%						
S9B-T1-0020	Tunnel portion 1 ELSW excavation	130	03-Oct-11	07-Mar-12	0%						
S9B-T1-0030	Tunnel portion 1 structure construction	100	09-Mar-12	09-Jul-12	0%						
S9B-T1-0040	Tunnel portion 1 backfilling and ELSW removal	54	10-Jul-12	10-Sep-12	0%						
Tunnel Portion 2											
S9B-T2-0105	Tunnel portion 2 Predrill & guide wall	10	02-Aug-12	13-Aug-12	0%						
S9B-T2-0010	Tunnel portion 2 diaphragm wall and bored pile works	100	14-Aug-12	10-Dec-12	0%						
S9B-T2-0015	Tunnel portion 2 Pump Test	14	03-Dec-12	18-Dec-12	0%						
S9B-T2-0020	Tunnel portion 2 ELSW excavation	80	11-Dec-12	19-Mar-13	0%						
S9B-T2-0030	Tunnel portion 2 structure construction	100	20-Mar-13	22-Jul-13	0%						
S9B-T2-0040	Tunnel portion 2 backfilling and ELSW removal	80	23-Jul-13	25-Oct-13	0%						
Tunnel Portion 3											
S9B-T3-0005	HEC 132kv diversion at Wan Shing Street Completed	0	01-Apr-12*		0%						
S9B-T3-0008	Tunnel portion 3 Predrill & guide wall	20	02-Oct-12	25-Oct-12	0%						
S9B-T3-0010	Remaining diaphragm wall, bored piles and temporary pipe pile wall at tunnel portion 3.	50	25-Oct-12	22-Dec-12	0%						
S9B-T3-0015	Tunnel portion 3 Pump Test	30	15-Dec-12	22-Jan-13	0%						
S9B-T3-0020	Tunnel portion 3 ELSW excavation	30	15-Jan-13	20-Feb-13	0%						
S9B-T3-0030	Tunnel portion 3 structure construction	80	21-Feb-13	08-May-13	0%						
S9B-T3-0040	Tunnel portion 3 backfilling and ELSW removal	30	07-May-13	11-Jun-13	0%						
Tunnel Portion 4											
S9B-T4-0005	Tunnel portion 4 Predrill & guide wall for section not at approach ramp	21	30-Aug-12	22-Sep-12	0%						
S9B-T4-0010	Diaphragm wall and bored pile for steel bridge no.1 above tunnel portion 4	40	24-Sep-12	10-Nov-12	0%						
S9B-T4-0020	Diaphragm wall & bored pile works at tunnel portion 4 (section not at approach ramp)	420	11-Sep-12	05-Feb-14	0%						
S9B-T4-0025	Tunnel portion 4 Predrill & guide wall (for section at approach ramp)	5	23-Dec-13	30-Dec-13	0%						
S9B-T4-0030	Diaphragm wall works for remaining area of tunnel portion 4 (for section at approach ramp)	30	31-Dec-13	06-Feb-14	0%						
S9B-T4-0035	Tunnel portion 4 Pump Test	14	28-Jan-14	14-Feb-14	0%						
S9B-T4-0040	Tunnel portion 4 ELSW excavation	60	07-Feb-14	19-Apr-14	0%						
S9B-T4-0050	Tunnel portion 4 structure construction	110	22-Apr-14	01-Sep-14	0%						
S9B-T4-0060	Tunnel portion 4 backfilling and ELSW removal	60	02-Sep-14	13-Nov-14	0%						
Section X Works - Central - Wan Chai Bypass Tunnel Structure from western tunnel to chainage 3400											
Tunnel Portion 5											
S10-T5-0005	Tunnel portion 5 Predrill & guide	21	23-Dec-14	19-Jan-15	0%						
S10-T5-0010	Tunnel portion 5 diaphragm wall & bored pile works	110	20-Jan-15	04-Jun-15	0%						
S10-T5-0015	Tunnel portion 5 pump test	14	13-Jun-15	30-Jun-15	0%						
S10-T5-0020	Tunnel portion 5 tunnel ELSW excavation	45	04-Jul-15	25-Aug-15	0%						
S10-T5-0030	Tunnel portion 5 tunnel structure construction	90	26-Aug-15	11-Dec-15	0%						
Tunnel Portion 6											
S10-T6-0040	Tunnel portion 6 Predrill & guide	12	24-Apr-15	08-May-15	0%						
S10-T6-0050	Tunnel portion 6 diaphragm wall & bored pile works at Area 10	45	09-May-15	09-Jul-15	0%						
S10-T6-0055	Tunnel portion 6 pump test	14	25-Jun-15	11-Jul-15	0%						
S10-T6-0060	Tunnel portion 6 tunnel ELSW excavation at Area 10	45	04-Jul-15	26-Aug-15	0%						
S10-T6-0070	Tunnel portion 6 tunnel structure construction at Area 10	58	26-Aug-15	04-Nov-15	0%						



Wan Chai Development Phase II - Central Wan Chai Bypass at Wan Chai East (Contract 2)
 CEDD CONTRACT NO. HK/2009/02
 Revised Programme dated 7 April 2011

Date	Revision	Checked	Approved
07-Apr-11		KT	KY

Page 10 of 11

Activity ID	Activity Name	Rem Dur	Start	Finish	2012																					
					2011					January					February					March				April		
					26	02	09	16	23	30	06	13	20	27	05	12	19	26	02	09	16					
3MRP - Jan 2012 to Apr 2012																										
01 - CONTRACT DATES																										
01.1 - Conditions																										
0110-1100	PMI for Section 1 of the Works	0		21-Jan-12																						
01.2 - Possession of Site																										
0120-2000	Possession to Portion X	0	21-Jan-12*																							
0120-2100	Possession to Portion III (Partial Possession)	0	31-Dec-11 A																							
0120-2200	Possession to Portion VA (Partial Possession)	0	31-Dec-11 A																							
0120-2300	Possession to Portion VB (Partial Possession)	0	31-Dec-11 A																							
0120-2400	Possession to Portion VC (Partial Possession)	0	31-Dec-11 A																							
0120-2500	Possession to Portion VD (Partial Possession)	0	31-Dec-11 A																							
01.5 - Period of Site Possession for each Portion																										
0150-1000	Site possession Period Portion VI	2070	20-Jan-11 A	20-Sep-17																						
0150-1100	Site Possession Period Portion VIIA	2070	04-Aug-11 A	20-Sep-17																						
0150-1200	Site Possession Period Portion VIIB	862	04-Aug-11 A	31-May-14																						
0150-1300	Site Possession Period Portion VIIC	1208	04-Aug-11 A	12-May-15																						
0150-1400	Site Possession Period Portion VIID	862	04-Aug-11 A	31-May-14																						
0150-1500	Site Possession Period Portion XI	622	05-Oct-11 A	04-Oct-13																						
0150-2000	Site Possession Period Portion X	2070	21-Jan-12	20-Sep-17																						
0150-2500	Site Possession Period Portion VD	1293	31-Dec-11 A	05-Aug-15																						
02 - PRE-CONSTRUCTION WORKS																										
02.2 - Contractor's Submission																										
0220-1200	Temp. Drainage Management Plan - Approval from ER	7	10-Sep-11 A	27-Jan-12																						
0220-1250	Concrete Ready Mix/Design Mix - Concrete Plant Trials & Approval	8	04-Aug-11 A	28-Jan-12																						
0220-1260	Drainage Pipes & Materials - Submission	14	15-Sep-11 A	03-Feb-12																						
0220-1270	Drainage Pipes & Materials - ER Review/Comment	14	04-Feb-12	17-Feb-12																						
0220-1280	Drainage Pipes & Materials - Resubmission	7	18-Feb-12	24-Feb-12																						
0220-1290	Drainage Pipes & Materials - ER Approval	14	25-Feb-12	09-Mar-12																						
0220-1300	Drainage Pipes & Materials - Procurement & Delivery	14	03-Mar-12	16-Mar-12																						
0220-1360	Tunnel Structures Materials - Submission	28	15-Mar-12	11-Apr-12																						
0220-1370	Tunnel Structures Materials - ER Review/Comment	28	12-Apr-12	09-May-12																						
0220-1460	Bridge Bearing - Submission	15	10-Oct-11 A	04-Feb-12																						
0220-1470	Bridge Bearing - ER Review/Comment	28	05-Feb-12	03-Mar-12																						
0220-1480	Bridge Bearing - Resubmission	14	04-Mar-12	17-Mar-12																						
0220-1490	Bridge Bearing - ER Approval	28	18-Mar-12	14-Apr-12																						
02.3 - Method Statement / Shop Drawings																										
0230-1131	MS Marine Piling - Submission (low headroom)	28	13-Feb-12	11-Mar-12																						
0230-1132	MS Marine Piling - ER Review & Comment (low headroom)	28	12-Mar-12	08-Apr-12																						
0230-1133	MS Marine Piling - Resubmission (low headroom)	28	09-Apr-12	06-May-12																						
0230-1260	MS Cut & Cover Tunnel - Submission	28	21-Jan-12	17-Feb-12																						
0230-1270	MS Cut & Cover Tunnel - ER Review & Comment	28	18-Feb-12	16-Mar-12																						
0230-1280	MS Cut & Cover Tunnel - Resubmission	28	17-Mar-12	13-Apr-12																						
0230-1340	MS Pre-cast Segment Bridge - Submission	28	01-Apr-12	28-Apr-12																						
0230-1460	MS Stressing/Destressing Tendons - Submission	28	01-Mar-12	28-Mar-12																						
					Contract HY/2009/19 Three Month Rolling Programme (21 JAN 2012 - 20 APR 2012)																	3MRP 3MRP - Jan 2012 to Apr 2012 Page 1 of 7				

Activity ID	Activity Name	Rem Dur	Start	Finish	2012															
					January				February				March				April			
					26	02	09	16	23	30	06	13	20	27	05	12	19	26	02	09
0230-1470	MS Stressing/Destressing Tendons - ER Review & Comment	28	29-Mar-12	25-Apr-12																
0230-1540	MS Precasting of Bridge Segment & Beam - Submission	30	14-Dec-11 A	19-Feb-12																
0230-1550	MS Precasting of Bridge Segment & Beam - ER Review & Comment	28	20-Feb-12	18-Mar-12																
0230-1560	MS Precasting of Bridge Segment & Beam - Resubmission	36	19-Mar-12	23-Apr-12																
02.4 - Contractor's Design and Build Items																				
0240-1010	Temp Bridge "TA" Design - Prep & Submit	102	16-Dec-11 A	01-May-12																
0240-1090	Int. Noise Enclosure Design - Public Consultation	126	29-Jul-11 A	25-May-12																
0240-1095	Int. Noise Enclosure Design - ACABAS/ER Consultation/Submission	81	16-Dec-11 A	10-Apr-12																
0240-1100	Int. Noise Enclosure Design - ER review & comment	28	11-Apr-12	08-May-12																
0240-1120	Noise Barrier Design - Public Consultation	126	29-Jul-11 A	25-May-12																
0240-1122	Noise Barrier Design - ACABAS/ER Consultation/Submission	81	16-Dec-11 A	10-Apr-12																
0240-1124	Noise Barrier Design - ER review & comment	28	11-Apr-12	08-May-12																
0240-1130	Perm. Noise Enclosure Design - Public Consultation	180	14-Feb-12	11-Aug-12																
0240-1371	Marine Bored Piling Platform Design (F9 to F14) - Submission	0	07-Nov-11 A	27-Dec-11 A																
0240-1372	Marine Bored Piling Platform Design (F9 to F14) - ER Review/Comment	0	28-Dec-11 A	10-Jan-12 A																
0240-1373	Marine Bored Piling Platform Design (F9 to F14) - Resubmission	3	11-Jan-12 A	23-Jan-12																
0240-1374	Marine Bored Piling Platform Design (F9 to F14) - ER Approval	14	23-Jan-12	06-Feb-12																
02.5 - Bridge Segment/Beam Off-site Precasting																				
0250-1000	Propose, approve and set-up Factory for Pre-cast Unit	114	14-Dec-11 A	13-May-12																
0250-1100	Geometric Design of the Bridge Segments/Beams	44	14-Dec-11 A	04-Mar-12																
0250-1200	Bridge Segment/Beam Mould Preparation	24	05-Mar-12	28-Mar-12																
0250-1300	Trial Casting for Bridge Segment/Beam	18	29-Mar-12	15-Apr-12																
03 - PRELIMINARY WORKS																				
03.1 - Site Establishment																				
0310-1290	Fabrication of Special Hoarding	19	24-Oct-11 A	15-Feb-12																
0310-1300	Hoarding at Portion VA & VB	40	15-Feb-12	02-Apr-12																
0310-1400	Move in Surcharge to Portion III & VD	6	02-Apr-12	12-Apr-12																
0310-1500	Surcharge kept on Site	90	12-Apr-12	11-Jul-12																
03.2 - Geotechnical Instrumentation and Monitoring Works																				
0320-1050	Geotechnical Instrumentation Portion IB, ID	0	14-Nov-11 A	20-Jan-12 A																
0320-1100	Geotechnical Instrumentation Portion X	60	21-Jan-12	03-Apr-12																
03.3 - Interface Works																				
0330-1100	Works at FEHD Permanent Depot (Stage 1)	36	21-Jan-12	06-Mar-12																
0330-1110	Submit to FEHD/ER Relocation Sequence & Programme	6	21-Jan-12	31-Jan-12																
0330-1120	Relocate FEHD to Permanent Depot at Portions IA & X	12	07-Mar-12	20-Mar-12																
04 - SECTION 1 OF THE WORKS (Subject to Excision)																				
04.1 - Drainage & Sewerage																				
0410-0980	Ground investigation + CAR & RAP approval	2	19-Jul-11 A	27-Jan-12																
0410-0990	Engineer Instruction to excision of the works	0		27-Jan-12																
0410-1010	Confirmatory Investigation/Sample/Tests/Decontamination	60	27-Jan-12	10-Apr-12																
0410-1020	Utility Coordination and Liaison	48	27-Jan-12	23-Mar-12																
0410-1030	Setting Out and Utility Detection & Protection at Portion XI	18	10-Apr-12	02-May-12																
05 - SECTION 2 & 2A OF THE WORKS																				
05.2 - Cut & Cover Tunnel Ch 4932-5149																				

Contract HY/2009/19

Three Month Rolling Programme (21 JAN 2012 - 20 APR 2012)







3MRP

3MRP - Jan 2012 to Apr 2012

Page 2 of 7

- Remaining Level of Effort
- Actual Level of Effort
- Actual Work
- Remaining Work
- Critical Remaining Work
- ◆ Milestone

Activity ID	Activity Name	Rem Dur	Start	Finish	2012															
					January				February				March				April			
					25	02	09	16	23	30	06	13	20	27	05	12	19	26	02	09
05.2.1 - D-Wall Construction																				
0521-1667	Construction of Temporary Loading Ramp at Portion VIIA	14	05-Dec-11 A	10-Feb-12	Construction of Temporary Loading Ramp at Portion VIIA															
0521-1710.05	D-wall Panel N106 (6m - 441cu.m)	10	23-Mar-12	03-Apr-12	D-wall Panel N106 (6m - 441cu.m)															
0521-1710.10	D-wall Panel N105 (4.8m - 354cu.m)	10	29-Feb-12	10-Mar-12	D-wall Panel N105 (4.8m - 354cu.m)															
0521-1710.15	D-wall Panel N104 (3.4m - 257cu.m)	10	11-Feb-12	22-Feb-12	D-wall Panel N104 (3.4m - 257cu.m)															
0521-1710.20	D-wall Panel N103 (3.4m - 256cu.m)	10	21-Jan-12	04-Feb-12	D-wall Panel N103 (3.4m - 256cu.m)															
0521-1710.30	D-wall Panel N102 (6m - 452cu.m)	0	21-Dec-11 A	05-Jan-12 A	D-wall Panel N102 (6m - 452cu.m)															
0521-1710.35	D-wall Panel N100 (6m - 456cu.m)	10	12-Mar-12	22-Mar-12	D-wall Panel N100 (6m - 456cu.m)															
0521-1710.40	D-wall Panel N99 (6m - 459cu.m)	12	31-Jan-12	13-Feb-12	D-wall Panel N99 (6m - 459cu.m)															
0521-1710.45	D-wall Panel N98 (6m - 462cu.m)	0	03-Dec-11 A	28-Dec-11 A	D-wall Panel N98 (6m - 462cu.m)															
0521-1710.55	D-wall Panel N96 (6m - 488cu.m)	6	03-Jan-12 A	31-Jan-12	D-wall Panel N96 (6m - 488cu.m)															
0521-1710.60	D-wall Panel N95 (6m - 492cu.m)	10	06-Feb-12	16-Feb-12	D-wall Panel N95 (6m - 492cu.m)															
0521-1750.05	D-wall Panel N94 (6m - 497cu.m)	10	23-Feb-12	05-Mar-12	D-wall Panel N94 (6m - 497cu.m)															
0521-1750.10	D-wall Panel N93 (6m - 501cu.m)	10	17-Mar-12	28-Mar-12	D-wall Panel N93 (6m - 501cu.m)															
0521-1750.15	D-wall Panel N92 (6m - 503cu.m)	10	06-Mar-12	16-Mar-12	D-wall Panel N92 (6m - 503cu.m)															
0521-1750.20	D-wall Panel N91 (6m - 472cu.m)	10	17-Feb-12	28-Feb-12	D-wall Panel N91 (6m - 472cu.m)															
0521-1750.25	D-wall Panel N90 (4.16m - 349cu.m)	0	01-Dec-11 A	30-Dec-11 A	D-wall Panel N90 (4.16m - 349cu.m)															
0521-1750.30	D-wall Panel N89 (4.16m - 349cu.m)	0	03-Nov-11 A	28-Dec-11 A	D-wall Panel N89 (4.16m - 349cu.m)															
0521-1750.35	D-wall Panel N88 (6m - 505cu.m)	0	19-Dec-11 A	13-Jan-12 A	D-wall Panel N88 (6m - 505cu.m)															
0521-1750.40	D-wall Panel N87 (6m - 506cu.m)	10	06-Mar-12	16-Mar-12	D-wall Panel N87 (6m - 506cu.m)															
0521-1750.45	D-wall Panel N86 (6m - 507cu.m)	10	29-Feb-12	10-Mar-12	D-wall Panel N86 (6m - 507cu.m)															
0521-1750.50	D-wall Panel N85 (6m - 507cu.m)	10	17-Feb-12	28-Feb-12	D-wall Panel N85 (6m - 507cu.m)															
0521-1750.55	D-wall Panel N84 (6m - 511cu.m)	5	11-Jan-12 A	30-Jan-12	D-wall Panel N84 (6m - 511cu.m)															
0521-1750.60	D-wall Panel N83 (6m - 517cu.m)	0	15-Dec-11 A	09-Jan-12 A	D-wall Panel N83 (6m - 517cu.m)															
0521-1790.10	D-wall Panel N74 (6m - 562cu.m)	10	12-Mar-12	22-Mar-12	D-wall Panel N74 (6m - 562cu.m)															
0521-1790.15	D-wall Panel N75 (6m - 554cu.m)	10	23-Feb-12	05-Mar-12	D-wall Panel N75 (6m - 554cu.m)															
0521-1790.20	D-wall Panel N76 (6m - 585cu.m)	10	11-Feb-12	22-Feb-12	D-wall Panel N76 (6m - 585cu.m)															
0521-1795.10	D-wall Panel N77 (6m - 570cu.m)	10	31-Jan-12	10-Feb-12	D-wall Panel N77 (6m - 570cu.m)															
0521-1795.15	D-wall Panel N78 (6m - 554cu.m)	5	09-Jan-12 A	30-Jan-12	D-wall Panel N78 (6m - 554cu.m)															
0521-1795.25	D-wall Panel N80 (6m - 537cu.m)	10	06-Feb-12	16-Feb-12	D-wall Panel N80 (6m - 537cu.m)															
0521-1795.30	D-wall Panel N81 (6m - 530cu.m)	0	24-Dec-11 A	16-Jan-12 A	D-wall Panel N81 (6m - 530cu.m)															
0521-1800	D-wall N59-N70 Pre-drilling (6 nos. remaining - 1 rig@6d/hole)	36	19-Sep-11 A	06-Mar-12	D-wall N59-N70 Pre-drilling (6 nos. remaining - 1 rig@6d/hole)															
0521-1810	D-wall N59-N70 Grouting for Existing Seawall Rubble Mound	21	07-Mar-12	30-Mar-12	D-wall N59-N70 Grouting for Existing Seawall Rubble Mound															
0521-1820	D-wall N59-N70 Guide Wall	12	31-Mar-12	17-Apr-12	D-wall N59-N70 Guide Wall															
0521-1840	D-wall N52-N58 Pre-drilling (7 nos@3d - 2 rig)	21	07-Mar-12	30-Mar-12	D-wall N52-N58 Pre-drilling (7 nos@3d - 2 rig)															
0521-1850	D-wall N52-N58 Grouting for Existing Seawall Rubble Mound	21	31-Mar-12	27-Apr-12	D-wall N52-N58 Grouting for Existing Seawall Rubble Mound															
0521-1920	D-wall Temp Grouting for Existing Seawall Rubble Mound	18	23-Feb-12	14-Mar-12	D-wall Temp Grouting for Existing Seawall Rubble Mound															
0521-1930	D-wall Temp End-wall Guide Wall	12	15-Mar-12	28-Mar-12	D-wall Temp End-wall Guide Wall															
0521-1945.15	Slurry-wall TEW2 (Set 2)	4	29-Mar-12	02-Apr-12	Slurry-wall TEW2 (Set 2)															
0521-1945.25	Slurry-wall TEW4 (Set 2)	4	03-Apr-12	10-Apr-12	Slurry-wall TEW4 (Set 2)															
0521-1945.35	Slurry-wall TEW6 (Set 2)	4	11-Apr-12	14-Apr-12	Slurry-wall TEW6 (Set 2)															
0521-1960.10	Site Establishment - Haul Road / Access Road	0	15-Nov-11 A	27-Dec-11 A	Site Establishment - Haul Road / Access Road															
0521-1960.20	Site Establishment - Additional Bentonite Plant	8	03-Jan-12 A	07-Feb-12	Site Establishment - Additional Bentonite Plant															
0521-1980	D-wall S102-S113 Guide Wall	12	10-Jan-12 A	07-Feb-12	D-wall S102-S113 Guide Wall															

-  Remaining Level of Effort
-  Actual Level of Effort
-  Actual Work
-  Remaining Work
-  Critical Remaining Work
-  Milestone

Contract HY/2009/19

Three Month Rolling Programme (21 JAN 2012 - 20 APR 2012)

3MRP

3MRP - Jan 2012 to Apr 2012

Page 3 of 7

Activity ID	Activity Name	Rem Dur	Start	Finish	2012															
					January				February				March				April			
					26	02	09	16	23	30	06	13	20	27	05	12	19	26	02	09
0521-1990.10	D-wall Panel S113 (3.28m - 244cu.m)	10	21-Jan-12	04-Feb-12																
0521-1990.20	D-wall Panel S111 (7.65m - 575cu.m)	10	14-Mar-12	24-Mar-12																
0521-1990.25	D-wall Panel S110 (5.4m - 409cu.m)	10	08-Feb-12	18-Feb-12																
0521-1990.30	D-wall Panel S109 (6m - 455cu.m)	10	25-Feb-12	07-Mar-12																
0521-1990.50	D-wall Panel S105 (6m - 458cu.m)	10	31-Mar-12	14-Apr-12																
0521-1990.55	D-wall Panel S104 (6m - 481cu.m)	10	20-Mar-12	30-Mar-12																
0521-1990.60	D-wall Panel S103 (6m - 484cu.m)	10	14-Feb-12	24-Feb-12																
0521-1990.65	D-wall Panel S102 (5.96m - 483 cu.m)	10	02-Mar-12	13-Mar-12																
0521-2010	D-wall S90-S101 Guide Wall	15	21-Jan-12	10-Feb-12																
0521-2020.20	D-wall Panel S99	10	10-Apr-12	20-Apr-12																
0521-2020.25	D-wall Panel S98	10	26-Mar-12	07-Apr-12																
0521-2020.30	D-wall Panel S97	10	20-Feb-12	01-Mar-12																
0521-2020.35	D-wall Panel S96	10	08-Mar-12	19-Mar-12																
0521-2020.40	D-wall Panel S95	10	05-Apr-12	18-Apr-12																
0521-2020.45	D-wall Panel S94	10	23-Mar-12	03-Apr-12																
0521-2020.50	D-wall Panel S93	10	13-Apr-12	24-Apr-12																
0521-2020.55	D-wall Panel S92	10	29-Mar-12	12-Apr-12																
0521-2020.65	D-wall Panel S90	10	17-Mar-12	28-Mar-12																
0521-2030	D-wall S78-S89 Pre-drilling	12	10-Nov-11 A	07-Feb-12																
0521-2040	D-wall S81-S89 Guide Wall	15	08-Feb-12	24-Feb-12																
0521-2050.20	D-wall Panel S83 (6m - 517cu.m)	12	05-Apr-12	20-Apr-12																
0521-2055.15	D-wall Panel S86 (6m - 507cu.m)	12	13-Apr-12	26-Apr-12																
0521-2060	D-wall S66-S77 Pre-drilling	25	08-Feb-12	07-Mar-12																
0521-2070	D-wall S66-S77 Guide Wall	15	08-Mar-12	24-Mar-12																
0521-2085	D-wall S66-S67 Construction (2 nos@8d - Team 4)	12	02-Apr-12*	18-Apr-12																
0521-2090	D-wall S60-S65 Pre-drilling	25	29-Mar-12	30-Apr-12																
0521-2150	D-wall N52-N106 G.I. Preliminary Report / Founding Level	37	07-Mar-12	21-Apr-12																
05.2.2 - Barrette Construction																				
0522-2180	Barrette BC53-BC56 Pre-drilling	18	08-Mar-12	28-Mar-12																
0522-2190	Barrette BC54-BC56 Grouting for Existing Seawall Rubble Mound	12	29-Mar-12	14-Apr-12																
0522-2220	Barrette BC57-BC68 Pre-drilling	0	14-Nov-11 A	28-Dec-11 A																
0522-2230	Barrette BC57-BC68 Grouting for Existing Seawall Rubble Mound	30	21-Jan-12	28-Feb-12																
0522-2240	Barrette BC57-BC68 Guide Wall	24	15-Feb-12	13-Mar-12																
0522-2270	Barrette BC43-BC52 Pre-drilling	25	19-Mar-12	19-Apr-12																
0522-2280	Barrette BC43-BC52 Grouting for Existing Seawall Rubble Mound	12	12-Apr-12	25-Apr-12																
05.2.3 - ELS																				
0523-2398	Prepare & Submit Documents as per ETWB TCW No. 15/2005	30	21-Jan-12	28-Feb-12																
05.3 - Box Culvert T1																				
0530-2990	Bay 4-5 Trench excavation	1	14-Nov-11 A	26-Jan-12																
0530-3000	Bay 4-5 Box Culvert Construction	42	26-Jan-12	15-Mar-12																
0530-3010	Bay 4-5 Road Reinstatement	7	15-Mar-12	23-Mar-12																
0530-3020	Implement Watson Road TTM Stage 2	3	21-Mar-12	23-Mar-12																
0530-3030	Bay 1-3 Site Clearance/Formation	3	24-Mar-12	27-Mar-12																
0530-3040	Bay 1-3 Trench excavation	36	28-Mar-12	12-May-12																

- ▬ Remaining Level of Effort
- ▬ Actual Level of Effort
- ▬ Actual Work
- ▬ Remaining Work
- ▬ Critical Remaining Work
- ◆ Milestone

Contract HY/2009/19

Three Month Rolling Programme (21 JAN 2012 - 20 APR 2012)

3MRP

3MRP - Jan 2012 to Apr 2012

Page 4 of 7

Activity ID	Activity Name	Rem Dur	Start	Finish	2012															
					January				February				March				April			
					26	02	09	16	23	30	06	13	20	27	05	12	19	26	02	09
0530-3111	Bay 9 - Sheet Piling Works	12	15-Oct-11 A	11-Feb-12	Bay 9 - Sheet Piling Works															
0530-3113	Bay 9 - Excavation	12	23-Feb-12	07-Mar-12	Bay 9 - Excavation															
0530-3114	Bay 9 - Box Culvert/Outfall Construction	48	08-Mar-12	07-May-12																
0530-3200	Storm Drainage 1500 Dia. Within Portlon X (FEHD)	60	21-Mar-12	02-Jun-12																
10 - SECTION X OF THE WORKS																				
10.1 - E/B Bridges (Bridge D, E and F)																				
10.1.1 - Marine Pier Construction																				
Prep F02 to F15																				
1011-1420	Extract Existing Dolphin Front Pile pier F9	0	26-Dec-11 A	26-Dec-11 A	Extract Existing Dolphin Front Pile pier F9															
1011-1425	Remove Existing Dolphin pier F9	0	31-Dec-11 A	03-Jan-12 A	Remove Existing Dolphin pier F9															
1011-1430	Extract Existing Dolphin Front Pile pier F10	0	29-Dec-11 A	29-Dec-11 A	Extract Existing Dolphin Front Pile pier F10															
1011-1435	Remove Existing Dolphin pier F10	0	31-Dec-11 A	03-Jan-12 A	Remove Existing Dolphin pier F10															
1011-1570.30	F7 piling platform - temporary piles 5 & 6	0	16-Dec-11 A	29-Dec-11 A	F7 piling platform - temporary piles 5 & 6															
1011-1570.40	F7 piling platform - erect steel platform modules 3 & 4	0	27-Dec-11 A	07-Jan-12 A	F7 piling platform - erect steel platform modules 3 & 4															
1011-1570.50	F7 piling platform - ICE	0	04-Jan-12 A	18-Jan-12 A	F7 piling platform - ICE															
1011-1580.20	F8 piling platform - erect steel platform modules 1 & 2	0	16-Nov-11 A	26-Dec-11 A	F8 piling platform - erect steel platform modules 1 & 2															
1011-1580.30	F8 piling platform - temporary piles 5 & 6	0	27-Dec-11 A	03-Jan-12 A	F8 piling platform - temporary piles 5 & 6															
1011-1580.40	F8 piling platform - erect steel platform modules 3 & 4	0	04-Jan-12 A	11-Jan-12 A	F8 piling platform - erect steel platform modules 3 & 4															
1011-1580.50	F8 piling platform - ICE	0	12-Jan-12 A	16-Jan-12 A	F8 piling platform - ICE															
1011-1590	Erect marine piling platform pier F9	32	10-Jan-12 A	02-Mar-12	Erect marine piling platform pier F9															
1011-1600	Erect marine piling platform pier F10	32	10-Jan-12 A	02-Mar-12	Erect marine piling platform pier F10															
1011-1610	Erect marine piling platform pier F11	18	20-Oct-11 A	15-Feb-12	Erect marine piling platform pier F11															
1011-1620	Erect marine piling platform pier F12	18	26-Oct-11 A	14-Feb-12	Erect marine piling platform pier F12															
1011-1630	Erect marine piling platform pier F13	18	01-Nov-11 A	20-Apr-12	Erect marine piling platform pier F13															
1011-1640	Erect marine piling platform pier F14	18	08-Nov-11 A	09-May-12	Erect marine piling platform pier F14															
1011-1670	Pre-drill F7 raking dolphin piles (2 nos.)	3	03-Dec-11 A	27-Jan-12	Pre-drill F7 raking dolphin piles (2 nos.)															
1011-1680	Pre-drill F8 raking dolphin piles (2 nos.)	5	05-Jan-12 A	02-Feb-12	Pre-drill F8 raking dolphin piles (2 nos.)															
1011-1690	Pre-drill F9 raking dolphin piles (2 nos.)	10	02-Mar-12	14-Mar-12	Pre-drill F9 raking dolphin piles (2 nos.)															
1011-1700	Pre-drill F10 raking dolphin piles (2 nos.)	10	14-Mar-12	26-Mar-12	Pre-drill F10 raking dolphin piles (2 nos.)															
1011-1710	Pre-drill F11 raking dolphin piles (2 nos.)	10	16-Feb-12	27-Feb-12	Pre-drill F11 raking dolphin piles (2 nos.)															
1011-1720	Pre-drill F12 raking dolphin piles (2 nos.)	10	28-Feb-12	09-Mar-12	Pre-drill F12 raking dolphin piles (2 nos.)															
1011-1760.20	Pier F3 Marine Bore Pile - F3-4	0	24-Dec-11 A	17-Jan-12 A	Pier F3 Marine Bore Pile - F3-4															
1011-1760.30	Pier F3 Marine Bore Pile - F3-7	12	21-Jan-12	07-Feb-12	Pier F3 Marine Bore Pile - F3-7															
1011-1760.40	Pier F3 Marine Bore Pile - F3-3	12	08-Feb-12	21-Feb-12	Pier F3 Marine Bore Pile - F3-3															
1011-1760.50	Pier F3 Marine Bore Pile - F3-6	12	22-Feb-12	06-Mar-12	Pier F3 Marine Bore Pile - F3-6															
1011-1760.60	Pier F3 Marine Bore Pile - F3-2	12	07-Mar-12	20-Mar-12	Pier F3 Marine Bore Pile - F3-2															
1011-1760.70	Pier F3 Marine Bore Pile - F3-5	12	21-Mar-12	03-Apr-12	Pier F3 Marine Bore Pile - F3-5															
1011-1760.80	Pier F3 Marine Bore Pile - F3-1	12	05-Apr-12	20-Apr-12	Pier F3 Marine Bore Pile - F3-1															
1011-1790	Pier F6 Dolphin Pile (team 4)	72	16-Mar-12	13-Jun-12	Pier F6 Dolphin Pile (team 4)															
1011-1800.10	Pier F6 Marine Bore Pile - F6-2	10	15-Dec-11 A	04-Feb-12	Pier F6 Marine Bore Pile - F6-2															
1011-1800.20	Pier F6 Marine Bore Pile - F6-3	11	07-Jan-12 A	17-Feb-12	Pier F6 Marine Bore Pile - F6-3															
1011-1800.30	Pier F6 Marine Bore Pile - F6-1	12	17-Feb-12	02-Mar-12	Pier F6 Marine Bore Pile - F6-1															
1011-1800.40	Pier F6 Marine Bore Pile - F6-4	12	02-Mar-12	16-Mar-12	Pier F6 Marine Bore Pile - F6-4															
1011-1802	Pier F9 Dolphin Pile (team 4)	72	16-Mar-12	13-Jun-12	Pier F9 Dolphin Pile (team 4)															

Remaining Level of Effort
 Actual Level of Effort
 Actual Work
 Remaining Work
 Critical Remaining Work
 Milestone

Contract HY/2009/19
Three Month Rolling Programme (21 JAN 2012 - 20 APR 2012)

3MRP
 3MRP - Jan 2012 to Apr 2012
 Page 5 of 7

Activity ID	Activity Name	Rem Dur	Start	Finish	2012															
					January				February				March				April			
					26	02	09	16	23	30	06	13	20	27	05	12	19	26	02	09
1011-1810	Pier F5 Dolphin Pile (team 3)	72	29-Feb-12	26-May-12	Pier F5 Marine Bore Pile - F5-4															
1011-1820.10	Pier F5 Marine Bore Pile - F5-4	0	09-Dec-11 A	07-Jan-12 A	Pier F5 Marine Bore Pile - F5-4															
1011-1820.20	Pier F5 Marine Bore Pile - F5-2	6	13-Jan-12 A	31-Jan-12	Pier F5 Marine Bore Pile - F5-2															
1011-1820.30	Pier F5 Marine Bore Pile - F5-1	12	01-Feb-12	14-Feb-12	Pier F5 Marine Bore Pile - F5-1															
1011-1820.40	Pier F5 Marine Bore Pile - F5-3	12	15-Feb-12	28-Feb-12	Pier F5 Marine Bore Pile - F5-3															
1011-1822	Pier F12 Dolphin Pile (team 3)	72	10-Mar-12	06-Jun-12	Pier F12 Dolphin Pile (team 3)															
1011-1850	Pier F4 Dolphin Pile (team 2)	36	21-Mar-12	05-May-12	Pier F4 Dolphin Pile (team 2)															
1011-1860.20	Pier F4 Marine Bore Pile - F4-6	0	19-Dec-11 A	14-Jan-12 A	Pier F4 Marine Bore Pile - F4-6															
1011-1860.30	Pier F4 Marine Bore Pile - F4-5	12	21-Jan-12	07-Feb-12	Pier F4 Marine Bore Pile - F4-5															
1011-1860.40	Pier F4 Marine Bore Pile - F4-2	12	08-Feb-12	21-Feb-12	Pier F4 Marine Bore Pile - F4-2															
1011-1860.50	Pier F4 Marine Bore Pile - F4-4	12	22-Feb-12	06-Mar-12	Pier F4 Marine Bore Pile - F4-4															
1011-1860.60	Pier F4 Marine Bore Pile - F4-1	12	07-Mar-12	20-Mar-12	Pier F4 Marine Bore Pile - F4-1															
1011-1864.10	Pier F8 Marine Bored Pile F8-4	8	16-Jan-12 A	03-Feb-12	Pier F8 Marine Bored Pile F8-4															
1011-1864.20	Pier F8 Marine Bored Pile F8-2	12	03-Feb-12	17-Feb-12	Pier F8 Marine Bored Pile F8-2															
1011-1864.30	Pier F8 Marine Bored Pile F8-3	12	17-Feb-12	02-Mar-12	Pier F8 Marine Bored Pile F8-3															
1011-1864.40	Pier F8 Marine Bored Pile F8-1	12	02-Mar-12	16-Mar-12	Pier F8 Marine Bored Pile F8-1															
1011-1910	Pier F7 Dolphin Pile (team 5)	72	19-Mar-12	15-Jun-12	Pier F7 Dolphin Pile (team 5)															
1011-1920.10	Pier F7 Marine Bored Pile F7-4	11	19-Jan-12 A	06-Feb-12	Pier F7 Marine Bored Pile F7-4															
1011-1920.20	Pier F7 Marine Bored Pile F7-2	12	06-Feb-12	20-Feb-12	Pier F7 Marine Bored Pile F7-2															
1011-1920.30	Pier F7 Marine Bored Pile F7-3	12	20-Feb-12	05-Mar-12	Pier F7 Marine Bored Pile F7-3															
1011-1920.40	Pier F7 Marine Bored Pile F7-1	12	05-Mar-12	19-Mar-12	Pier F7 Marine Bored Pile F7-1															
1011-2010	Dismantle Piling Platform at Pier F5	6	21-Mar-12	27-Mar-12	Dismantle Piling Platform at Pier F5															
1011-2020	Dismantle Piling Platform at Pier F6	6	10-Apr-12	17-Apr-12	Dismantle Piling Platform at Pier F6															
1011-2100	Marine bored pile testing F5	18	29-Feb-12	20-Mar-12	Marine bored pile testing F5															
1011-2105	Marine bored pile testing F6	18	16-Mar-12	10-Apr-12	Marine bored pile testing F6															
Pier F01 to F02					◆ Possession to Portion III															
1011-2540	Possession to Portion III	0	31-Dec-11 A		Possession to Portion III															
1011-2550	Marine piling preparation works, portion III	0	31-Dec-11 A	06-Jan-12 A	Marine piling preparation works, portion III															
1011-2560	Erect Piling Platform pier F2B	7	09-Jan-12 A	01-Feb-12	Erect Piling Platform pier F2B															
1011-2570	Erect Pre-drilling Platform pier F2A	9	11-Feb-12	22-Feb-12	Erect Pre-drilling Platform pier F2A															
1011-2580	Erect Pre-drilling Platform pier F1B	9	01-Feb-12	11-Feb-12	Erect Pre-drilling Platform pier F1B															
1011-2590	Erect Pre-drilling Platform pier F1A	9	22-Feb-12	03-Mar-12	Erect Pre-drilling Platform pier F1A															
1011-2600	Pre-drilling pier F2B	10	22-Feb-12	05-Mar-12	Pre-drilling pier F2B															
1011-2610	Pre-drilling pier F2A	15	22-Feb-12	10-Mar-12	Pre-drilling pier F2A															
1011-2620	Pre-drilling pier F1B	10	05-Mar-12	16-Mar-12	Pre-drilling pier F1B															
1011-2630	Pre-drilling pier F1A	15	05-Mar-12	22-Mar-12	Pre-drilling pier F1A															
1011-2635	Portion III Marine Pile G.I. Final Report / Founding Level	30	22-Mar-12	30-Apr-12	Portion III Marine Pile G.I. Final Report / Founding Level															
1011-2660	Remove existing dolphin pier F2	0	31-Dec-11 A	03-Jan-12 A	Remove existing dolphin pier F2															
1011-2690	Remove existing dolphin pier F1	0	31-Dec-11 A	03-Jan-12 A	Remove existing dolphin pier F1															
1011-2770	Marine bored pile F2B	48	29-Mar-12	29-May-12	Marine bored pile F2B															
1011-2780	Marine bored pile F1B	48	29-Mar-12	29-May-12	Marine bored pile F1B															
10.1.2 - Land Pier Construction					◆ Milestone															
Pier D08 to D11					◆ Milestone															
1012-1010	Site Survey and Setting Out at Portion III	0	31-Dec-11 A	06-Jan-12 A	Site Survey and Setting Out at Portion III															




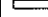
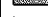

Remaining Level of Effort
 Actual Level of Effort
 Actual Work
 Remaining Work
 Critical Remaining Work
 Milestone

Contract HY/2009/19

Three Month Rolling Programme (21 JAN 2012 - 20 APR 2012)

3MRP
 3MRP - Jan 2012 to Apr 2012
 Page 6 of 7

Activity ID	Activity Name	Rem Dur	Start	Finish	2012																																	
					2011							January							February							March							April					
					26	02	09	16	23	30	06	13	20	27	05	12	19	26	02	09	16	23	30	06	13	20	27	05	12	19	26	02	09	16				
1012-1015	Pre-drilling for Piling (D08 to D12) at III (28 no.) (4set)	16	03-Jan-12 A	13-Feb-12	Pre-drilling for Piling (D08 to D12) at III (28 no.) (4set)																																	
1012-1020	Portion III Land Pile G.I. Prelim Report / Founding Level	6	13-Feb-12	20-Feb-12	Portion III Land Pile G.I. Prelim Report / Founding Level																																	
1012-1025	Portion III Land Pile G.I. Final Report / Founding Level	24	20-Feb-12	19-Mar-12	Portion III Land Pile G.I. Final Report / Founding Level																																	
1012-1030.10	Pier D08 Bored Pile D8-1	12	13-Feb-12	27-Feb-12	Pier D08 Bored Pile D8-1																																	
1012-1030.20	Pier D08 Bored Pile D8-6	12	27-Feb-12	12-Mar-12	Pier D08 Bored Pile D8-6																																	
1012-1030.30	Pier D08 Bored Pile D8-2	12	12-Mar-12	26-Mar-12	Pier D08 Bored Pile D8-2																																	
1012-1030.40	Pier D08 Bored Pile D8-5	12	26-Mar-12	12-Apr-12	Pier D08 Bored Pile D8-5																																	
1012-1030.50	Pier D08 Bored Pile D8-3	12	12-Apr-12	26-Apr-12	Pier D08 Bored Pile D8-3																																	
1012-1040.10	Pier D09 Bored Pile D9-1	12	13-Feb-12	27-Feb-12	Pier D09 Bored Pile D9-1																																	
1012-1040.20	Pier D09 Bored Pile D9-6	12	27-Feb-12	12-Mar-12	Pier D09 Bored Pile D9-6																																	
1012-1040.30	Pier D09 Bored Pile D9-2	12	12-Mar-12	26-Mar-12	Pier D09 Bored Pile D9-2																																	
1012-1040.40	Pier D09 Bored Pile D9-5	12	26-Mar-12	12-Apr-12	Pier D09 Bored Pile D9-5																																	
1012-1040.50	Pier D09 Bored Pile D9-3	12	12-Apr-12	26-Apr-12	Pier D09 Bored Pile D9-3																																	
1012-1050.10	Pier D10 Bored Pile D10-1	12	20-Feb-12	05-Mar-12	Pier D10 Bored Pile D10-1																																	
1012-1050.20	Pier D10 Bored Pile D10-6	12	05-Mar-12	19-Mar-12	Pier D10 Bored Pile D10-6																																	
1012-1050.30	Pier D10 Bored Pile D10-2	12	19-Mar-12	02-Apr-12	Pier D10 Bored Pile D10-2																																	
1012-1050.40	Pier D10 Bored Pile D10-5	12	02-Apr-12	19-Apr-12	Pier D10 Bored Pile D10-5																																	
1012-1060.10	Pier D11 Bored Pile D11-1	12	05-Mar-12	19-Mar-12	Pier D11 Bored Pile D11-1																																	
1012-1060.20	Pier D11 Bored Pile D11-6	12	19-Mar-12	02-Apr-12	Pier D11 Bored Pile D11-6																																	
1012-1060.30	Pier D11 Bored Pile D11-2	12	02-Apr-12	19-Apr-12	Pier D11 Bored Pile D11-2																																	
Pier D05 to D07																																						
1012-1260	Pre-drilling for 18 nos Piling at VIIB (2set)	11	08-Aug-11 A	06-Feb-12	Pre-drilling for 18 nos Piling at VIIB (2set)																																	
1012-1265	Portion VIIB Land Pile G.I. Final Report / Founding Level	15	03-Oct-11 A	23-Feb-12	Portion VIIB Land Pile G.I. Final Report / Founding Level																																	
1012-1270	Pier D07 Bored Piles (6 piles)	108	23-Feb-12	05-Jul-12	Pier D07 Bored Piles (6 piles)																																	
1012-1280.50	Pier D06 Bored Pile D06-4	8	03-Jan-12 A	02-Feb-12	Pier D06 Bored Pile D06-4																																	
1012-1280.60	Pier D06 Bored Pile D06-3	0	21-Dec-11 A	18-Jan-12 A	Pier D06 Bored Pile D06-3																																	
1012-1290.20	Pier D05 Bored Pile D05-1	13	02-Dec-11 A	19-Apr-12	Pier D05 Bored Pile D05-1																																	
10.1.3 - E/B Bridge Construction																																						
Bridge D3																																						
1013-1000	Design & Procurement of Launching Girder	75	21-Jan-12	24-Apr-12	Design & Procurement of Launching Girder																																	
14 - SECTION 14 OF THE WORKS																																						
14.1 - Soft Landscape																																						
1410-1000	Transplant. of ex. Trees to Nursery & upkeep	1515	21-Jan-12	09-Feb-17	Transplant. of ex. Trees to Nursery & upkeep																																	

-  Remaining Level of Effort
-  Actual Level of Effort
-  Actual Work
-  Remaining Work
-  Critical Remaining Work
-  Milestone

Contract HY/2009/19
Three Month Rolling Programme (21 JAN 2012 - 20 APR 2012)

3MRP
3MRP - Jan 2012 to Apr 2012
Page 7 of 7

Activity ID	Activity Name	Rem Dur	Start	Finish	2012																	
					March					April					May				June			
					20	27	05	12	19	26	02	09	16	23	30	07	14	21	28	04	11	18
3MRP - MAR 2012 to JUN 2012																						
01 - CONTRACT DATES																						
01.1 - Conditions																						
0110-1100	PMI for Section 1 of the Works	0		21-Mar-12																◆ PMI for Section 1 of the Works		
01.5 - Period of Site Possession for each Portion																						
0150-1000	Site possession Period Portion VI	2030	20-Jan-11 A	10-Oct-17																		
0150-1100	Site Possession Period Portion VIIA	2030	04-Aug-11 A	10-Oct-17																		
0150-1200	Site Possession Period Portion VIIB	732	04-Aug-11 A	22-Mar-14																		
0150-1300	Site Possession Period Portion VIIC	1169	04-Aug-11 A	02-Jun-15																		
0150-1400	Site Possession Period Portion VIID	732	04-Aug-11 A	22-Mar-14																		
0150-1500	Site Possession Period Portion XI	622	05-Oct-11 A	03-Dec-13																		
0150-1700	Site Possession Period Portion IB	732	10-Nov-11 A	22-Mar-14																		
0150-1800	Site Possession Period Portion IC	1169	10-Nov-11 A	02-Jun-15																		
0150-1900	Site Possession Period Portion ID	732	10-Nov-11 A	22-Mar-14																		
0150-2000	Site Possession Period Portion X	2030	10-Nov-11 A	10-Oct-17																		
0150-2100	Site Possession Period Portion III	2030	31-Dec-11 A	10-Oct-17																		
0150-2200	Site Possession Period Portion VA	2030	31-Dec-11 A	10-Oct-17																		
0150-2300	Site Possession Period Portion VB	976	31-Dec-11 A	21-Nov-14																		
0150-2400	Site Possession Period Portion VC	2030	31-Dec-11 A	10-Oct-17																		
0150-2500	Site Possession Period Portion VD	1233	31-Dec-11 A	05-Aug-15																		
02 - PRE-CONSTRUCTION WORKS																						
02.2 - Contractor's Submission																						
0220-1250	Concrete Ready Mix/Design Mix - Concrete Plant Trials & Approval	8	04-Aug-11 A	28-Mar-12																Concrete Ready Mix/Design Mix - Concrete Plant Trials & Approval		
0220-1260	Drainage Pipes & Materials - Submission	7	15-Sep-11 A	27-Mar-12																Drainage Pipes & Materials - Submission		
0220-1270	Drainage Pipes & Materials - ER Review/Comment	14	28-Mar-12	10-Apr-12																Drainage Pipes & Materials - ER Review/Comment		
0220-1280	Drainage Pipes & Materials - Resubmission	7	11-Apr-12	17-Apr-12																Drainage Pipes & Materials - Resubmission		
0220-1290	Drainage Pipes & Materials - ER Approval	14	18-Apr-12	01-May-12																Drainage Pipes & Materials - ER Approval		
0220-1300	Drainage Pipes & Materials - Procurement & Delivery	14	25-Apr-12	08-May-12																Drainage Pipes & Materials - Procurement & Delivery		
0220-1360	Tunnel Structures Materials - Submission	28	21-Mar-12	17-Apr-12																Tunnel Structures Materials - Submission		
0220-1370	Tunnel Structures Materials - ER Review/Comment	28	18-Apr-12	15-May-12																Tunnel Structures Materials - ER Review/Comment		
0220-1380	Tunnel Structures Materials - Resubmission	14	16-May-12	29-May-12																Tunnel Structures Materials - Resubmission		
0220-1390	Tunnel Structures Materials - ER Approval	21	30-May-12	19-Jun-12																Tunnel Structures Materials - ER Approval		
0220-1460	Bridge Bearing - Submission	15	10-Oct-11 A	04-Apr-12																Bridge Bearing - Submission		
0220-1470	Bridge Bearing - ER Review/Comment	28	05-Apr-12	02-May-12																Bridge Bearing - ER Review/Comment		
0220-1480	Bridge Bearing - Resubmission	14	03-May-12	16-May-12																Bridge Bearing - Resubmission		
0220-1490	Bridge Bearing - ER Approval	28	17-May-12	13-Jun-12																Bridge Bearing - ER Approval		
02.3 - Method Statement / Shop Drawings																						
0230-1131	MS Marine Piling - Submission (low headroom)	28	21-Mar-12	17-Apr-12																MS Marine Piling - Submission (low headroom)		
0230-1132	MS Marine Piling - ER Review & Comment (low headroom)	28	18-Apr-12	15-May-12																MS Marine Piling - ER Review & Comment (low headroom)		
0230-1133	MS Marine Piling - Resubmission (low headroom)	28	16-May-12	12-Jun-12																MS Marine Piling - Resubmission (low headroom)		
0230-1260	MS Cut & Cover Tunnel - Submission	28	21-Mar-12	17-Apr-12																MS Cut & Cover Tunnel - Submission		
0230-1270	MS Cut & Cover Tunnel - ER Review & Comment	28	18-Apr-12	15-May-12																MS Cut & Cover Tunnel - ER Review & Comment		
0230-1280	MS Cut & Cover Tunnel - Resubmission	28	16-May-12	12-Jun-12																MS Cut & Cover Tunnel - Resubmission		
0230-1340	MS Pre-cast Segment Bridge - Submission	28	01-Apr-12	28-Apr-12																MS Pre-cast Segment Bridge - Submission		

- Remaining Level of Effort
- Actual Level of Effort
- Actual Work
- Remaining Work
- Critical Remaining Work
- ◆ Milestone

Contract HY/2009/19

Three Month Rolling Programme (21 MAR 2012 to 20 JUN 2012)

3MRP

3MRP - MAR 2012 to JUN 2012

Page 1 of 7

Activity ID	Activity Name	Rem Dur	Start	Finish	2012																	
					March					April					May				June			
					20	27	05	12	19	26	02	09	16	23	30	07	14	21	28	04	11	18
0230-1350	MS Pre-cast Segment Bridge - ER Review & Comment	28	29-Apr-12	26-May-12																		
0230-1360	MS Pre-cast Segment Bridge - Resubmission	28	27-May-12	23-Jun-12																		
0230-1460	MS Stressing/Destressing Tendons - Submission	28	21-Mar-12	17-Apr-12																		
0230-1470	MS Stressing/Destressing Tendons - ER Review & Comment	28	18-Apr-12	15-May-12																		
0230-1480	MS Stressing/Destressing Tendons - Resubmission	28	16-May-12	12-Jun-12																		
0230-1540	MS Precasting of Bridge Segment & Beam - Submission	18	14-Dec-11 A	07-Apr-12																		
0230-1550	MS Precasting of Bridge Segment & Beam - ER Review & Comment	28	08-Apr-12	05-May-12																		
0230-1560	MS Precasting of Bridge Segment & Beam - Resubmission	36	06-May-12	10-Jun-12																		
0230-1570	MS Precasting of Bridge Segment & Beam - ER Approval	28	11-Jun-12	08-Jul-12																		
0230-1700	MS Temporary Bridge TA - Submission	28	03-Jun-12	30-Jun-12																		
02.4 - Contractor's Design and Build Items																						
0240-1010	Temp Bridge "TA" Design - Prep & Submit	60	16-Dec-11 A	19-May-12																		
0240-1020	Temp Bridge "TA" Design - ER review and comment	28	20-May-12	16-Jun-12																		
0240-1041	Temp Bridge "TD" Design - Prep & Submit	120	14-Apr-12	11-Aug-12																		
0240-1090	Int. Noise Enclosure Design - Public Consultation	90	29-Jul-11 A	18-Jun-12																		
0240-1095	Int. Noise Enclosure Design - ACABAS/ER Consultation/Submission	81	16-Dec-11 A	09-Jun-12																		
0240-1100	Int. Noise Enclosure Design - ER review & comment	28	10-Jun-12	07-Jul-12																		
0240-1120	Noise Barrier Design - Public Consultation	90	29-Jul-11 A	18-Jun-12																		
0240-1122	Noise Barrier Design - ACABAS/ER Consultation/Submission	81	16-Dec-11 A	09-Jun-12																		
0240-1124	Noise Barrier Design - ER review & comment	28	10-Jun-12	07-Jul-12																		
0240-1130	Perm. Noise Enclosure Design - Public Consultation	166	14-Feb-12 A	02-Sep-12																		
02.5 - Bridge Segment/Beam Off-site Precasting																						
0250-1000	Propose, approve and set-up Factory for Pre-cast Unit	61	14-Dec-11 A	20-May-12																		
0250-1100	Geometric Design of the Bridge Segments/Beams	26	14-Dec-11 A	15-Apr-12																		
0250-1200	Bridge Segment/Beam Mould Preparation	24	15-Apr-12	09-May-12																		
0250-1300	Trial Casting for Bridge Segment/Beam	18	09-May-12	27-May-12																		
0250-1400	Preparation for Bridge Segment /Beam Production	30	27-May-12	26-Jun-12																		
03 - PRELIMINARY WORKS																						
03.1 - Site Establishment																						
0310-1290	Fabrication of Special Hoarding	64	24-Oct-11 A	07-Jun-12																		
0310-1300	Hoarding at Portion VA & VB	40	07-Jun-12	26-Jul-12*																		
0310-1400	Move in Surcharge to Portion III & VD	6	21-Mar-12	27-Mar-12																		
0310-1500	Surcharge kept on Site	90	28-Mar-12	25-Jun-12																		
03.2 - Geotechnical Instrumentation & Monitoring Works																						
0320-1100	Geotechnical Instrumentation Portion X	60	21-Mar-12	02-Jun-12																		
03.3 - Interface Works																						
0330-1100	Works at FEHD Permanent Depot (Stage 1)	36	21-Mar-12	05-May-12																		
0330-1110	Submit to FEHD/ER Relocation Sequence & Programme	6	21-Mar-12	27-Mar-12																		
0330-1120	Relocate FEHD to Permanent Depot at Portions IA & X	12	07-May-12	19-May-12																		
04 - SECTION 1 OF THE WORKS (Subject to Excision)																						
04.1 - Drainage & Sewerage																						
0410-0980	Ground investigation + CAR & RAP approval	2	19-Jul-11 A	23-Mar-12																		
0410-0990	Engineer Instruction to excision of the works	0		23-Mar-12																		
0410-1010	Confirmatory Investigation/Sample/Tests/Decontamination	60	23-Mar-12	06-Jun-12																		

- Remaining Level of Effort
- Actual Level of Effort
- Actual Work
- Remaining Work
- Critical Remaining Work
- ◆ Milestone

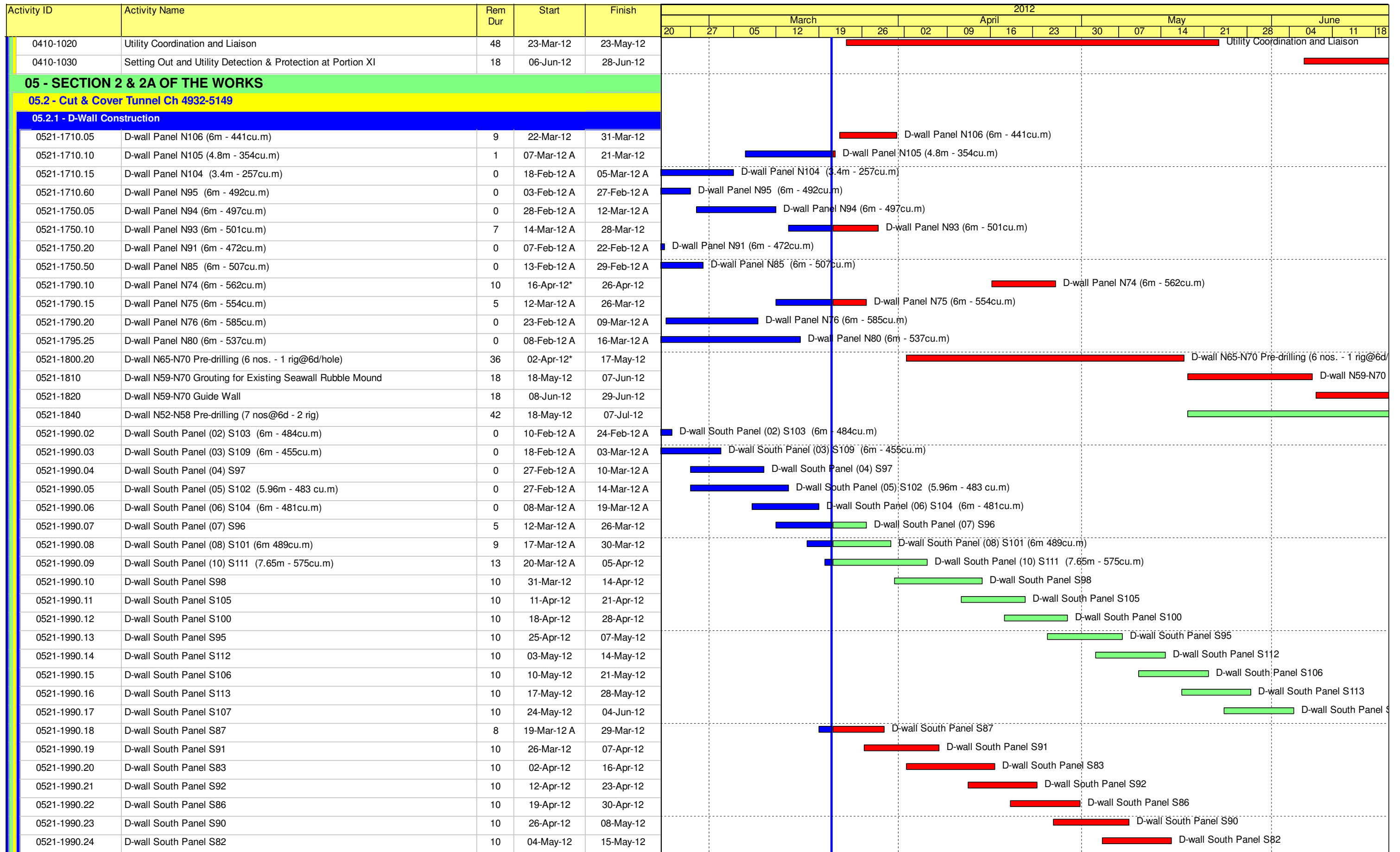
Contract HY/2009/19

Three Month Rolling Programme (21 MAR 2012 to 20 JUN 2012)

3MRP

3MRP - MAR 2012 to JUN 2012

Page 2 of 7



- █ Remaining Level of Effort
- █ Actual Level of Effort
- █ Actual Work
- █ Remaining Work
- █ Critical Remaining Work
- ◆ Milestone

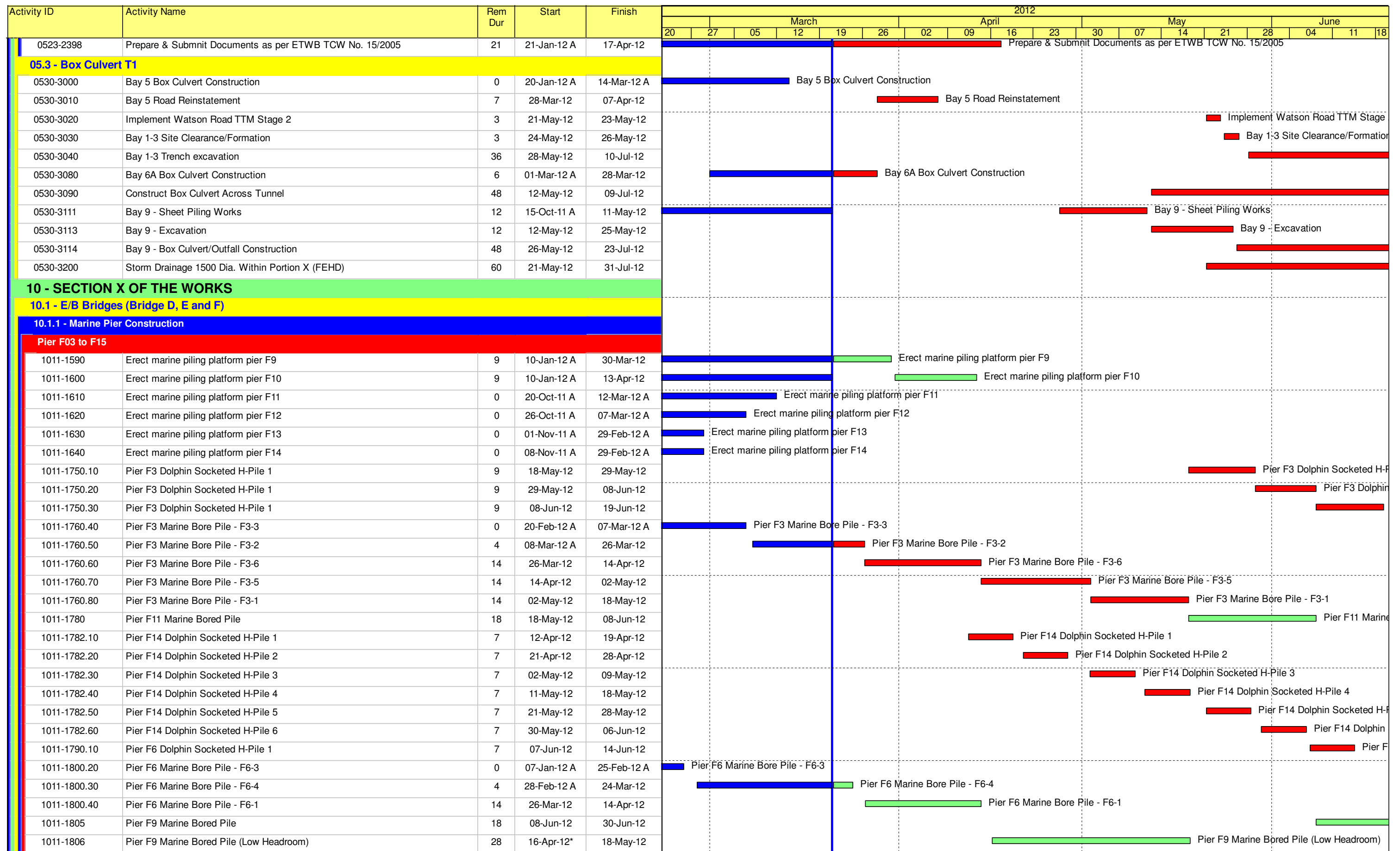
Contract HY/2009/19

Three Month Rolling Programme (21 MAR 2012 to 20 JUN 2012)

3MRP

3MRP - MAR 2012 to JUN 2012

Page 3 of 7



- Remaining Level of Effort
- Actual Level of Effort
- Actual Work
- Remaining Work
- Critical Remaining Work
- ◆ Milestone

Contract HY/2009/19

Three Month Rolling Programme (21 MAR 2012 to 20 JUN 2012)

3MRP

3MRP - MAR 2012 to JUN 2012

Page 5 of 7

Activity ID	Activity Name	Rem Dur	Start	Finish	2012																	
					March					April					May				June			
					20	27	05	12	19	26	02	09	16	23	30	07	14	21	28	04	11	18
Abutment D12																						
1012-1071	Abutment E/B Bridge Bored Pile D12-1	0	21-Feb-12 A	17-Mar-12 A	Abutment E/B Bridge Bored Pile D12-1																	
1012-1072	Abutment E/B Bridge Bored Pile D12-8	9	17-Mar-12 A	30-Mar-12	Abutment E/B Bridge Bored Pile D12-8																	
1012-1073	Abutment E/B Bridge Bored Pile D12-3	12	31-Mar-12	17-Apr-12	Abutment E/B Bridge Bored Pile D12-3																	
1012-1074	Abutment E/B Bridge Bored Pile D12-4	12	18-Apr-12	02-May-12	Abutment E/B Bridge Bored Pile D12-4																	
1012-1090	Abutment D12 E/B Bridge Bored Pile Testing	18	03-May-12	23-May-12	Abutment D12 E/B Bridge Bored Pile																	
1012-1220	Abutment D12 construction (E/B Bridge)	42	24-May-12	13-Jul-12																		
Pier D08 to D11																						
1012-1015	Pre-drilling for Pilings (D08 to D12) at III (28 no.) (4set)	0	03-Jan-12 A	07-Mar-12 A	Pre-drilling for Pilings (D08 to D12) at III (28 no.) (4set)																	
1012-1020	Portion III Land Pile G.I. Prelim Report / Founding Level	6	21-Mar-12	27-Mar-12	Portion III Land Pile G.I. Prelim Report / Founding Level																	
1012-1025	Portion III Land Pile G.I. Final Report / Founding Level	24	28-Mar-12	27-Apr-12	Portion III Land Pile G.I. Final Report / Founding Level																	
1012-1040.20	Pier D09 Bored Pile D9-2	0	20-Feb-12 A	02-Mar-12 A	Pier D09 Bored Pile D9-2																	
1012-1040.30	Pier D09 Bored Pile D9-1	0	03-Mar-12 A	17-Mar-12 A	Pier D09 Bored Pile D9-1																	
1012-1040.40	Pier D09 Bored Pile D9-4	10	19-Mar-12 A	31-Mar-12	Pier D09 Bored Pile D9-4																	
1012-1040.50	Pier D09 Bored Pile D9-3	12	02-Apr-12	18-Apr-12	Pier D09 Bored Pile D9-3																	
1012-1040.60	Pier D09 Bored Pile D9-6	12	19-Apr-12	03-May-12	Pier D09 Bored Pile D9-6																	
1012-1050.10	Pier D10 Bored Pile D10-2	0	29-Feb-12 A	12-Mar-12 A	Pier D10 Bored Pile D10-2																	
1012-1050.20	Pier D10 Bored Pile D10-5	3	11-Mar-12 A	23-Mar-12	Pier D10 Bored Pile D10-5																	
1012-1050.30	Pier D10 Bored Pile D10-2	12	24-Mar-12	10-Apr-12	Pier D10 Bored Pile D10-2																	
1012-1050.40	Pier D10 Bored Pile D10-5	12	11-Apr-12	24-Apr-12	Pier D10 Bored Pile D10-5																	
1012-1050.50	Pier D10 Bored Pile D10-3	12	25-Apr-12	09-May-12	Pier D10 Bored Pile D10-3																	
1012-1050.60	Pier D10 Bored Pile D10-4	12	10-May-12	23-May-12	Pier D10 Bored Pile D10-4																	
1012-1060.10	Pier D11 Bored Pile D11-5	0	13-Feb-12 A	27-Feb-12 A	Pier D11 Bored Pile D11-5																	
1012-1060.20	Pier D11 Bored Pile D11-2	6	28-Feb-12 A	27-Mar-12	Pier D11 Bored Pile D11-2																	
1012-1060.30	Pier D11 Bored Pile D11-2	12	28-Mar-12	13-Apr-12	Pier D11 Bored Pile D11-2																	
1012-1060.40	Pier D11 Bored Pile D11-1	12	14-Apr-12	27-Apr-12	Pier D11 Bored Pile D11-1																	
1012-1060.50	Pier D11 Bored Pile D11-3	12	28-Apr-12	12-May-12	Pier D11 Bored Pile D11-3																	
1012-1060.60	Pier D11 Bored Pile D11-4	12	14-May-12	26-May-12	Pier D11 Bored Pile D11-4																	
1012-1130	Pier D09 Construct Pile Cap	18	18-May-12	07-Jun-12	Pier D09 Constr																	
1012-1140	Pier D09 Construct Pier/Column	12	08-Jun-12	21-Jun-12																		
1012-1190	Pier D11 Construct Pile Cap	18	11-Jun-12	03-Jul-12																		
Pier D05 to D07																						
1012-1270	Pier D07 Bored Piles (6 piles)	108	04-May-12	08-Sep-12																		
1012-1290.20	Pier D05 Bored Pile D05-1	13	02-Dec-11 A	07-Jun-12	Pier D05 Bored																	
1012-1300	Pier D05/D06/D07 Bored Piles Testing	18	07-Jun-12	29-Jun-12																		
10.1.3 - E/B Bridge Construction																						
Bridge D3																						
1013-1000	Design & Procurement of Launching Girder	68	21-Jan-12 A	12-Jun-12	Design &																	
1013-1010	Fabrication & Delivery of Launching Girder	75	12-Jun-12	10-Sep-12																		

- █ Remaining Level of Effort
- █ Actual Level of Effort
- █ Actual Work
- █ Remaining Work
- █ Critical Remaining Work
- ◆ Milestone

Contract HY/2009/19

Three Month Rolling Programme (21 MAR 2012 to 20 JUN 2012)

3MRP

3MRP - MAR 2012 to JUN 2012

Page 7 of 7